

# CALIFORNIA NATIVE PLANT SOCIETY MARIN CHAPTER



*Camissoniopsis cheiranthifolia* - beach evening primrose by Ann Elliott

## May 2026 Newsletter

### Marin Chapter Meeting

#### "Stewardship Planning at Point Reyes National Seashore"

Guest Speaker: **Greg Richardson**, [Bio](#), [The Nature Conservancy](#)

Monday, **May 11, 2026 at 7:30 pm**

Following a [Revised Record of Decision](#) (ROD) for [Management of Ranching on Park Lands of Point Reyes National Seashore](#) and departure of the majority of the dairy and cattle ranches, [The Nature Conservancy](#) (TNC) will be working with the National Park Service (NPS) and partner organizations to steward former ranch lands for ecological benefit. They will use a variety of tools including targeted grazing to control invasive weeds and encroaching brush on former grassy pastures and range lands. TNC and [Point Reyes National Seashore Association](#) (PRNSA) are also coordinating with volunteers from the Marin Chapter of CNPS to monitor the impact of targeted grazing on a selection of rare plants.

[Read more.](#)

Join us! Register for this Zoom meeting [here](#).



View across Creamery Bay to Bull Point, one area where targeted grazing will be occurring this summer and fall

"Milk run" by Mark Gunn, CC BY-SA 4.0

# Chapter Picnic at China Camp with Field Trips

Sunday, **May 17, 2026, 10:30 am to 3 pm**

Join us at the Miwok Meadows Group Picnic area in China Camp State Park for an informal gathering of native plant lovers.

- Enjoy simple potluck fare. (Bring some fun bread, cheese, or fruit if you don't cook.)
- Visit with others about recent wildflower discoveries, garden additions and visits, botanical insights, restoration achievements, and advocacy goals.
- Learn about The Friends of China Camp's habitat restoration efforts in the park.
- Share remembrances of Laura Lovett's dedication to native plants.
- Take an optional field trip around Turtle Back Hill. It is a lovely, varied trail traversing grasslands, scrub, and mixed evergreen forest, at the edge of saltmarsh of the San Francisco Bay Estuary.



**Potluck Picnic Gathering at noon, eat at 12:30**

**Docent led hikes around Turtle Back Hill begin at 10:30 am and 2 pm.**

[Read more.](#) Please sign up for this event on [Meetup](#) or **just show up.**

## Marin Chapter Field Trips

Sign up for field trips using [Meetup.com](#) or the [Meetup app](#). Signups usually begin the first of each month at 8 am.

**Meetup is free for users.**

**Do not pay for Meetup +.**

[CNPS Marin 2026 Waiver](#) - You are required to complete this waiver for field trips and Chapter-sponsored stewardship opportunities only once per calendar year.

Practice clean trail etiquette. [Pocket Guide – Every Step Counts](#) and [Cleanliness Tips for Hikers](#).

Contact the leader(s) with any questions.

\*\*\*\*\*



*Abronia latifolia* - yellow sand verbena  
in Tennessee Valley Photo by Anna Gil

## Mt. Tamalpais Gravity Car Road Wildflower and Nature Photography Walk

Friday, **May 1, 2026 8 to 10:30 am**

Leaders: **Caroline Christman** and **Marcos Gaxiola**

Join us for an early morning walk to enjoy the scenic beauty of the eastern slopes of Mt. Tamalpais, learn some native plants, and practice nature photography along the way. This will be a space for people who enjoy nature and photography to come together, have fun, and hopefully learn something new or simply connect with other photographers.

On the walk, Caroline will point out some of the diverse plants found along the trail, from the Pacific starflower ([Lysimachia latifolia](#)) in the shade of the redwoods to the golden blooms of the peak rush-rose ([Crocyanthemum scoparium](#)) in open chaparral. Marcos will share simple, approachable photography techniques for composition, working with natural light, and capturing close-up details using whatever camera you bring on walks. Though not a professional photographer, Marcos enjoys nature photography as a way to slow down, observe, and connect more deeply with the landscape. He has a particular interest in capturing textures, light, and small details like insects, and will share his enthusiasm and methods with the group.

[Read more with directions.](#)

[Register on Meetup.](#)

\*\*\*\*\*

## Turtle Back Hill, China Camp

Sunday, **May 17, 2026 10:30 am** and also at **2 pm**

Enjoy a late spring stroll around Turtle Back Hill. We will enjoy late spring flowers, identify several oak species, and explore the edges of the tidal marsh along this fairly level ¾ mile trail. Park along North San Pedro Road (best access is from the north due to road work) about .3 mi past of the campground entrance.

Join us before or after for our [Chapter potluck picnic](#) at nearby Miwok Meadows.

\*\*\*\*\*

## Wildflower Field Trips on Ring Mountain, Tiburon

Join Ring Mountain Docents Alison Pence and Karen Madsen for short wildflower forays 10 am to 12:30. Each few weeks different wildflowers become showy, so a number of trips are planned. See the [website posting](#) for details.

### Day Date Location & Leader

Sun. **5/24** Taylor Rd Trailhead w/Alison Pence

Tues. **5/26** Paradise Dr. - Phyllis Ellman Trailhead w/Karen Madsen

Sun. **6/7** Taylor Rd Trailhead w/Alison Pence



Iris with bee Photo by Marcos Gaxiola



*Quercus kelloggii* - California black oak  
Photo by Ann Elliott



*Calochortus tiburonensis* - Tiburon Mariposa lily  
Photo by Vernon Smith

[Read more with directions, map and signups.](#)

\*\*\*\*\*

### Ring Mountain Geology and Wildflowers

Saturday, **May 30, 2026**, 2:30 to 5 pm

Leaders: **Nicole Myers** and **Kristin Jakob**

Join geologist Nicole Myers and botanist Kristin Jakob for a late afternoon ramble on Ring Mountain in Tiburon. Learn how the amazing and unique geology of this mountain is the basis for its landscape, rocks, and soils. We will see the relationship between these landforms and the plant communities that they support.

Geologic highlights are serpentinite outcrops and metamorphic rocks of basaltic origins in the upper portions and sandstone and shale formations on the lower slopes. The nutrient poor serpentinite supports rare plants like the Tiburon mariposa lily and Marin dwarf flax. Along our route, we will encounter an array of native plants and flowers depending on weather. Wavy-leaved soap plant blossoms start opening about 4 pm, which will make our descent from the mountain enchanting.



*Chlorogalum pomeridianum* - soaproot

Photo by Stacey Pogorzelski

[Read more with directions.](#)

[Register on Meetup.](#)

\*\*\*\*\*

### Have a Field Trip Idea?

Do you have a favorite place you want to share with the CNPS Marin community?

Write up a short description and contact [Ann Elliott](#) to explore possibilities.

We have a new [Field Trip Template for 2026](#) to help us gather the information needed for the writeup.



*Lysimachia latifolia* - Pacific starflower in Olompali SHP

Photo by Anna Gil

## Stewardship Opportunities

\*\*\*\*\*

### Ring Mountain Habitat Restoration Work Days

Friday, **May 8, 2026**, 9:30am-12pm

Leader: **Amanda Magallanes**, Ring Mountain Stewardship Coordinator

Marin CNPS Coordinator: **Caroline Christman**

Location: **Ring Mountain Preserve, Tiburon**



Ring Mountain is well-known for beautiful views and stunning wildflower displays. Its serpentine grasslands are home to several rare plants including the Oakland star tulip ([Calochortus umbellatus](#)) and the Tiburon mariposa lily ([Calochortus tiburonensis](#)), which is found nowhere else. CNPS has a [long history of supporting Ring Mountain](#) and is continuing that work with a stewardship focus. Join us for 2nd Friday work days for a morning of hands-on work to protect native habitat. We will focus on removing non-native invasive plants, such as tocalote ([Centaurea melitensis](#)), false brome

([Brachypodium distachyon](#)), and Italian thistle ([Carduus pycnocephalus](#)). Removing invasive plants frees space and resources for native grasses and wildflowers to thrive. After a morning of rewarding work, Amanda will lead a short plant walk to enjoy the abundant wildflowers including tidy tips, goldfields, and owl's clover, and to see if the Tiburon mariposa lily is blooming.

[Read more including directions.](#)

[Meetup Registration Link](#)

\*\*\*\*\*

### Mt. Burdell Habitat Restoration Work Party!

Thursday, May 16, 2026, 9 – 11 am

Leaders: **Greg Reza**, Marin County Parks and Open Space District Volunteer Program Coordinator

Marin CNPS Coordinators: **Caroline Christman** and **Stacey Pogorzelski**

Join a community of habitat restorers! Marin CNPS is partnering with Marin County Open Space District staff to remove invasive species and improve native habitat at Mt. Burdell. Located at the northern edge of Novato, Mt. Burdell has serpentine grasslands with rare plants, an incredible array of oaks, and seasonal streams that support milkweed- the critical host for Monarch butterflies.



CNPS Marin volunteers and Marin Co. Parks staff bagging invasive weeds on Mt. Burdell

During this workday we will continue hand removal of several invasive species, including Bermuda buttercup ([Oxalis pes-caprae](#)), Himalayan blackberry ([Rubus armeniacus](#)), and pennyroyal ([Mentha pulegium](#)). The Bermuda buttercup population is expanding rapidly, spreading from a small patch near the entry gate towards the nearby grasslands, and threatens to diminish wildflower diversity. Volunteers tarped a large area of Bermuda buttercup earlier this winter, and we will work on controlling other areas with manual removal. Himalayan blackberry grows along the stream channel and creates dense thickets that outcompete all other plants. Removing the non-native blackberry protects habitat for milkweed and other pollinator plants, as well as native shrubs such as snowberry.

[Read more including directions.](#)

[Meetup Registration Link for May 14](#)

Join us again on [June 4](#)

\*\*\*\*\*

### Volunteer Workday at Marin County Parks Native Plant Nursery

Tuesday, May 19, 2026 10 am to noon (also on June 16, third Tuesdays)

Leader: **Aja Wylder**, Marin County Parks Nursery Manager

CNPS Marin Coordinator: **Lewis Randall**

Join other volunteers for our monthly morning at the [Marin County Parks and Open Space District Nursery](#). The *third Tuesday* of each month we help maintain the native plants that will be used in restoration projects across Marin, from intertidal marsh wetlands to redwood forest. No prior nursery experience is required; Nursery Manager Aja Wylder will demonstrate nursery methods, including pruning, potting seedlings, transplanting plants into larger pots, pot washing, and working in the native plant garden.



Volunteers should wear sturdy, closed-toed shoes and clothes they don't mind getting dirty. Please bring sun protection and a water bottle. Gloves and tools will be provided.

[Read more.](#)      [Register on Meetup for May 19,](#)      Join us again on June 16.

\*\*\*\*\*

### Habitat Restoration at Alder Ck. Preserve, Inverness

Thursday, **May 21, 2026, 1 to 4 pm (fourth Thursdays of each month)**

CNPS Marin Coordinator: **Carolyn Longstreth**

Join CNPS and friends to weed the Alder Creek Preserve restoration site in Inverness. We will be tackling these weeds: acacia seedlings, poison hemlock, vinca, African veldt grass, and others.

[Read more.](#)      [Meetup Registration Link](#)



Alder Creek Preserve with flourishing natives & lots of weedy grass      Photo by Ann Elliott

## Plant Keying Sessions Will Continue Through Summer

Join us for monthly drop-in plant keying sessions at Dominican University. Bring your mystery plants and unknown specimens for identification. At these hands-on sessions you can practice your keying skills in a group setting and learn quickly alongside fellow botanists and plant lovers.

Beginners to experts are welcome. Some understanding of plant morphology terms is helpful. Dissection scopes, dichotomous keys, and local experts available.

We will meet from 6:30-8:30 pm on the 2nd Tuesday of each month: **May 12, June 9, July 14, and August 11.** Location is Room 106 at the Joseph R. Fink Science Center, Dominican University.

[Read more with helpful driving and parking directions.](#)

Contact [Tanya](#) with any questions.



Plant keying sessions at Dominican.

## Fairfax Festival & EcoFest June 13 & 14

CNPS Marin will have an information and sales table at the [Fairfax EcoFest](#). Share your love of wild flowers, passion for native plant gardening, and interests in habitat restoration and protecting our local resources.

**Sign up with Rob to help staff our table Saturday June 13 or Sunday June 14.** Help spread the word about CNPS Marin's meetings, outings, and volunteer opportunities.

Contact [Rob Katz](#).



Fairfax Festival      Photo by Rob Katz

# It is Garden Tour Season

## Bringing Back the Natives Garden Tour and Green Home Features Showcase in the East Bay – May 2 & 3

[Registration and Garden Descriptions](#) are here for this long-running native plant garden tour.

## Eco-Friendly Garden Tour in Sonoma & Marin Counties – May 9

The Sonoma-Marín Saving Water Partnership represents 13 water utilities in Sonoma and Marin counties that have joined together to provide regional solutions for water use efficiency. They offer water saving tips including rebates for lawn conversions. Find inspiration on their yearly self-guided [Eco-Friendly Garden Tour](#) showcasing sustainable landscapes. [Registration is free](#) for this event on **May 9 from 10 am – 4 pm**.

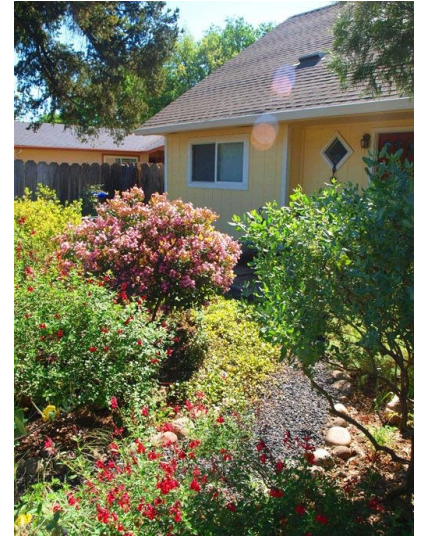
There are several Marin gardens this year. Visit Refugia Marin, Hall Middle School, Homeground Habitats, and Paul B.'s garden: [Natives for the South Slope](#). Paul's garden is exclusively California natives selected for a wildlife purpose: berries and seeds for birds and year-round flowers for pollinators. Two recent lawn conversions are also on the tour: Miranda W.'s [Lawn Be Gone](#) in Novato and [Bee and Butterfly Friendly Garden](#) in San Anselmo.

## Climate-Friendly Garden Tour- Napa Valley – May 17

The Napa Resource Conservation District (RCD) organizes this tour of private and public gardens in Napa. Gardens will showcase beautiful and vibrant landscapes that are climate-friendly and water-wise. Mini-workshops will be held at select sites throughout the day. [Registration](#): \$5 for Adults **before May 9** / \$10 for Adults **May 9 and after** / Free for Kids

## Gardening for Life

On a related note, be inspired by reading Betsey Crawford's article "[Gardening as if life depends on it](#)" about garden tours, lawn conversions, gardening to support insects and wildlife, and how native plant gardeners advocate for our biodiverse planet.



Native habitat garden near Town Park, Corte Madera by Refugia Marin



*Dicentra formosa* - Western bleeding heart Betsey Crawford

## Spring Native Plant Sale Thank You

Lots of folks have now added plants from the sale to their growing native plant gardens just in time for some late spring rain. As you enjoy your garden, think of locations that might need a new plant that you can purchase at our fall sale.

Our online and in person plant sales went smoothly thanks to the efforts of many. We truly could not have done it without our volunteers! Their energy, enthusiasm, and expertise made for a very successful event.

The Marin CNPS annual plant sales are a great way to educate and interact with gardeners and promote natives in the garden setting, and they're also an important fundraising tool. Income from plant sales goes into our general fund, out of which we support grants and scholarships, special projects, other environmental organizations, and speaker honoraria. Thank you for supporting Marin Chapter.

We also have sad news to share. Laura Lovett, our Plant Sale Committee Co-Chair, passed away from terminal cancer a week after overseeing the spring sale. Her impressive legacy includes managing our long-running plant sales and shepherding many native horticultural projects. She was key in designing a number of CNPS publications such as [Plant Checklist for Point Reyes National Seashore](#) and [Beauty and the Beast](#), as well as our new CNPS Marin [website](#). Laura was instrumental in the development of the [Larkspur Habitat Corridor](#), in which native plants play leading roles in a variety of public gardens in the Larkspur area, and she led CNPS Marin to contribute funding toward purchasing the plants for the new [Larkspur Library's native plant garden](#), currently being installed. She also spearheaded the creation of the [Bay Model Pollinator Garden](#) on the Sausalito waterfront where visitors can learn about using native plants in their own gardens. In many ways big and small, Laura helped share the beauty and ecological importance of native plants in our communities. Laura's vision, energy, and determination will continue to be an inspiration to us all.



*Asclepias speciosa* - showy milkweed seedpods  
Photo by Laura Lovett



Laura Lovett weeding at the Bay Model Pollinator Garden  
Photo by Caroline Christman

## Project Wingspan Offers Seeds and Plugs

Project Wingspan will provide FREE local ecotype native seed and plugs to help create new pollinator habitat or enhance existing habitat areas. Available species include milkweed and other important nectar and forage plants.

Seeds and plants will be distributed in Fall 2026 to successful applicants with "shovel ready" projects in the following counties: Alameda, Contra Costa, Sonoma, San Mateo, Marin, Mendocino, or Napa County. [Apply by May 15, 2026](#).

To learn more, visit their website at [pollinator.org/wingspan](http://pollinator.org/wingspan) or reach out to James Hart ([james@pollinator.org](mailto:james@pollinator.org)).

Associated: **6/5 9 am – 1 pm** [Take a tour of Heritage Growers](#), the seed processing and amplification farm for Project Wingspan in Colusa, CA.



# CNPS Conference Recordings

Recordings of the CNPS Conference in February, 2026 are now available at: <https://conference.cnps.org/sessions/>. Sessions fostered dialogue, discovery, and inspiration across four key areas: horticulture and land management, conservation, education, and plant science.

Chaired by experts in each field, the sessions featured presenters from diverse backgrounds — from Indigenous and Western sciences to horticulture, education, and advocacy. See presentations by inspiring high school and college students, knowledgeable volunteers, and dedicated professionals, young and old.



Of particular interest to Pt. Reyes coastal grassland/scrub management are: Fine Scale Grassland Mapping in EBRPD and Tule Elk Effects on Coastal Grassland at Tomales Pt. which are found on the first and fifth presentations at: <https://www.youtube.com/watch?v=qEflnEHcd34>

# Other Stewardship Opportunities

## Point Reyes National Seashore

### [Thursday Weeders @ Abbotts Lagoon](#)

Join park staff & volunteers every other Thursday 10am-2pm to help restore critical coastal dune habitat. **May 14 & 28, June 11 & 25**

### [Habitat Helpers: Mapping the Myrtle Silverspot Butterfly's Host Plant!](#)

Habitat mapping of the host plant for the Myrtle Silverspot butterfly needs your help! We month effort to map Western National Seashore. A small counted week. The higher the density survival of the Myrtle this citizen science mapping **and 23rd. [Please register in advance for instructions.](#)**



*Viola adunca* - Western dog violet Tanya Baxter



are 1/3 of the way through a 2 Dog violet on the Point Reyes team of industrious volunteers 8,270 *Viola adunca* in the first of dog violet the greater the Silverspot caterpillars. **Join us in effort May 7th, 9th and May 21**

Read more about this and other [PRNSA's restoration events.](#)

\*\*\*\*\*

## Chicken Ranch Beach Restoration

Tomales Bay Foundation and SPAWN are nurturing this amazing restoration of the wetland behind Chicken Ranch Beach in Inverness. Last fall contractors removed invasive acacias and other vegetation, and recontoured the creek channel. Over the past several months, SPAWN has coordinated volunteers in revegetating the wetland with shrubs and perennials.

The effort there is on-going. Right now, a lush cover of meadow barley (*Hordeum brachyantherum*) is beginning to flower in the moist areas. Volunteers are needed to control invasive weeds that could hinder the newly planted natives. Now that the grasses on site are flowering we can see more clearly which to pull and which to encourage. There is also watering to be done! Join the effort of this transformation on these Wednesdays and Saturdays:

Saturdays: **5/9, 5/23, 6/6, 7/18, 8/15, 8/29**

Wednesdays: **5/13, 5/27, 6/10, 7/8, 7/22, 8/5, 8/19**

Contact [Kristen Hopper](#) for specifics.

\*\*\*\*\*

## Broom Service in San Geronimo Valley

In the past few weeks, Broom Service volunteers met the challenge of steep inclines, lots of down wood, dense understory, and heavy poison oak. They were being tested, and they passed! In the process, they removed many large French broom plants. Tory, Will, Eric and Chloe slow a moment to allow for a photo. Few of their sites are as formidable as this one, and they are moving to easier territory now.

There is plenty of French, Scotch and Spanish broom that is accessible and easy to pull everywhere in Marin, especially in winter and spring when the ground is damp and soft. **If you see it, pull it.** You'll be doing the native landscape, wildlife, and all of us a favor.

[Contact Mel Wright](#) for more information about Broom Service and how to join their Thursday morning work parties.

Contact [Eddie Robertson](#) to borrow weed wrenches from Marin Chapter to use on your property.

## Upcoming Marin Chapter Events

5/1 8 – 10:30 am [Mt. Tamalpais Gravity Car Road Wildflower and Nature Photography Walk](#)

5/8 9:30 am – noon [Ring Mt. Habitat Restoration Work Days](#)

5/11 7:30 pm [“Stewardship Planning at Point Reyes National Seashore”](#) Chapter Meeting

5/12 6:30 - 8:30 pm [Plant Keying Session at Dominican](#)

5/14 9 – 11 am [Mt. Burdell Habitat Restoration](#)

5/17 10 am – 3 pm [Chapter Picnic at China Camp State Park](#)



*Eriophyllum confertiflorum* - golden yarrow at Chicken Ranch Beach Wetland Restoration Ann Elliott



*Castilleja subinclusa* ssp. *franciscana* - Franciscan paintbrush in Tennessee Valley by Anna Gil

5/19 10 am – noon [Volunteer Workday at Marin Co. Parks Native Plant Nursery](#)

5/24 10 am – 12:30 pm [Ring Mt. Field Trip](#)

5/26 10 am – 12:30 pm [Ring Mt. Field Trip](#)

5/30 2:30 pm – 5 pm [Ring Mt. Geology and Wildflowers](#)

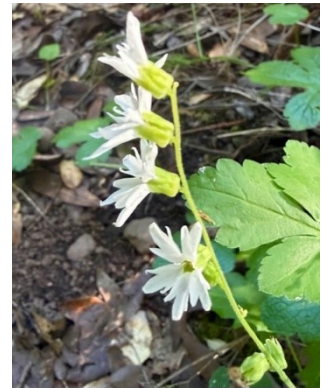
6/4 9 – 11 am [Mt. Burdell Habitat Restoration](#)

6/7 10 am – 12:30 pm [Ring Mt. Field Trip](#)

6/9 6:30 – 8:30 pm [Plant Keying Session at Dominican](#)

6/16 10 am – noon Volunteer Workday at Marin Co. Parks Native Plant Nursery

6/20 9 am – noon Olompali Orchid Field Trip (open for registration 6/1)



*Lithophragma heterophyllum* - woodland star in Olompali SHP by Anna Gil

## Other Native Plant Activities in Marin, Nearby, or Virtual

5/2 & 5/3 [Bringing Back the Natives Garden Tour](#)

5/9 10 am – 4 pm [2026 Eco-Friendly Garden Tour](#) in Sonoma & Marin,

5/16 2 – 4 pm [FARE Native Plants Workshop](#) at Museum of the American Indian in Novato

This event focuses on promoting partnerships in our communities to protect native plants and habitat. Topics: native plant gardening/landscaping, native plant seed collecting/exchange, Indigenous community initiatives (land sovereignty movement, stewardship, use of fire), and foraging in Marin County. **Native Plant walks will be offered by CNPS members Stacey and Caroline.**

5/17 10 am – 4 pm [Climate-Friendly Garden Tour – Napa Valley](#)

6/5 9 am – 1 pm [Tour of Heritage Growers](#), Seed processing and amplification farm for Project Wingspan in Colusa, CA.

\*\*\*\*\*

### Also checkout:

[CNPS.org/events](#) for interesting talks and field trips sponsored by CNPS Chapters and staff throughout the state.

[Events Calendar for Marin County Parks](#). They host a variety of local hikes, service projects, and presentations.

[Plant Walks hosted by Milo Baker Chapter, Sonoma.](#)

[Wildflower Hikes hosted by Napa Valley Chapter.](#)

[Regional Parks Botanic Garden](#) talks, workshops, tours and plant sales.

[Point Reyes Nature](#) has great ideas for exploring the Point Reyes National Seashore.

[The Soul of the Earth](#) Betsey Crawford's nature essay series.

[Marin Agricultural Land Trust](#) (MALT) offers hikes on local ranch properties.

[Bay Nature Events](#)



*Rubus ursinus* - CA blackberry in Tennessee Valley by Anna Gil



*Lonicera involucrata* - twinberry honeysuckle in Tennessee Valley by Anna Gil

## April Showers Bring May Flowers

The soaking rain storms of April will hopefully prolong the wildflower season and certainly gave our plants some needed moisture before the predicted El Nino summer ahead.

Opportunities abound for viewing native plants in their prime at the Eco-Friendly Garden Tour, field trips, stewardship events, and your private explorations. Enjoy the green for a while longer. I'd love to share **your** stories and pictures in an upcoming newsletter. Please send them to me.

If you enjoy social media:

- Post pictures from field trips and stewardship on our [Meetup group](#).
- Post your wild discoveries on our Facebook group. [Marin Native Plants](#)
- Check out news and events at our Facebook group [California Native Plant Society - Marin Chapter](#).
- Follow us on Instagram [marincnps](#).
- Post anywhere with the hashtag #marinnativeplants.

[Ann Elliott](#), Newsletter Editor & Field Trip Committee



*Madia sativa* - coast tarweed in Tennessee Valley by Anna Gil



[Join/Renew](#) [Donate](#)

[CNPS Marin Chapter Website](#) | [CNPS Statewide Website](#)



2707 K Street, Suite 1, Sacramento, CA 95816-5130 | Tel: (916) 447-2677  
California Native Plant Society ©2026 All rights reserved.