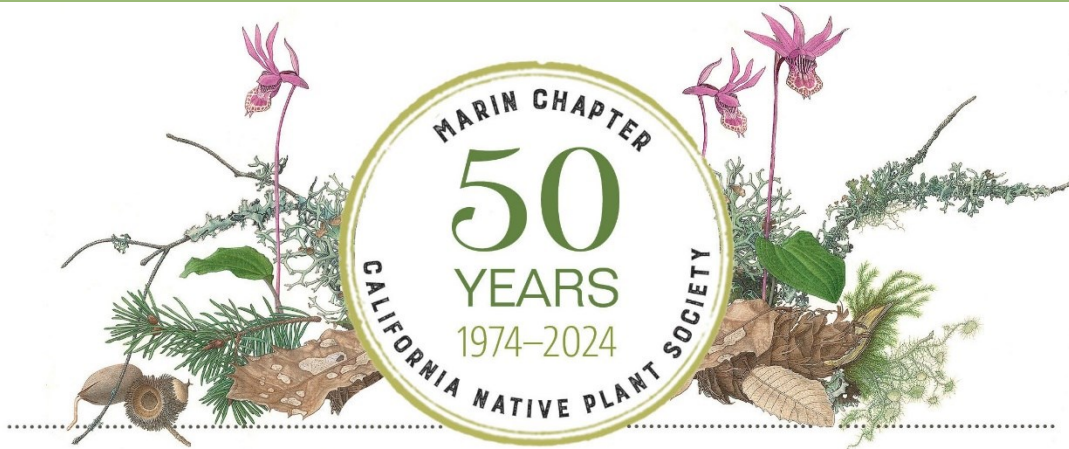


CALIFORNIA NATIVE PLANT SOCIETY MARIN CHAPTER



April 2024 Newsletter

Spring Native Plant Sale Starts April 4th

The rain continues to provide great planting weather.

Marin Chapter's Spring Native Plant sale will offer perennials, flowering shrubs, summer annuals, and bulbs to enhance your habitat gardens.

Order online through our website CNPSmarin.org.

Online Plant Sale *Opens*: **Thursday April 4 at 6 pm**

Online Plant Sale *Closes*: **Monday April 8 at 6 pm**

Order *Pickup* at Bon Air: **Saturday April 13, 10:30 am to 1 pm**

[Read more. . .](#)



Mimulus cardinalis - scarlet monkeyflower is one of many plants we will have for sale. By Laura Lovett

Marin Chapter Meeting

“Bowman Canyon, New Acquisition to Mount Burdell Preserve”

Guest Speakers: **Julian Geoghegan**, Vegetation Ecologist and **Jon Campo**, Principal Natural Resources Planner for Marin County Parks

Monday, April 8 @ 7:30 pm

Bowman Canyon is a recently purchased addition to Mount Burdell Preserve on its western boundary. Jon and Julian will describe the Marin County Parks public access planning process for this 400-acre property. The presentation will highlight the existing conditions of the property, vegetation assessments, and thoughtful public access planning informed by numerous biological studies.



Serpentine Grassland - Bowman Canyon

Join Marin CNPS led by Susan Schlosser in an exploration of [Bowman Canyon on April 14, 2024](#).

[Read more...](#)


[Register for this Zoom meeting here.](#)

Marin Chapter Turns 50

50th Anniversary Activities that you can join.

50 Acts of Caring Challenge


Make your landscape a healthier place with our list of simple things that you can do.

 Visit [@marincnps](https://www.instagram.com/marincnps) for the first 30 ideas. New this week:

- Make a Bee Hotel or a Bat House
- Why to Avoid Dyed Mulch
- Use a Rain Garden to Slow Heavy Rains
- Feed the Soil Correctly

[Read more...](#)

50 Native Plants Challenge

 Join our [iNaturalist](#) project and seek out native plants in the wild. [Read more...](#)

[Marin CNPS 50th Anniversary Marin Native Plant Challenge List](#)



Marin Chapter Field Trips

- Sign up for most field trips using [Meetup.com](https://www.meetup.com) or the [Meetup app](#).
- Electronically sign the CNPS waiver (once per year). [2024 Marin CNPS WaiverSign Link](#).
- Contact the leader(s) with any questions.

Hoo-Koo-E-Koo Trail, Kentfield

Wednesday, April 3, 2024 - 12:30 to 4:30 pm

Leaders: **Betsey Crawford & Ann Elliott**

This afternoon stroll is less than 3 miles out and back, depending on how far we decide to go. The walk alternates between forest and chaparral. HKEK trail is a wildflower gold mine and flowers we may see include iris, blue dicks, larkspur, buckwheat, mint, silene and others. There are always manzanita, huckleberry, ferns, buckeye, and chinquapins.

The hike is mostly easy, single-file. There is a short, steep stretch to reach and leave the trail and a few places where the trail itself is roots or rocks for a few paces.

[Read more . . .](#)

[Meetup Registration Link](#)

Bowman Canyon, Mt. Burdell Preserve

Sunday, April 14, 2024 - 10 am to 2 pm

Leader: **Susan Schlosser**

In this recently acquired parcel, we will observe plants in riparian, grassland, woodland and serpentine habitats. There are beautiful views from the upper portion of the serpentine area.

The first part of the field trip passes through a bay, oak and buckeye forest along Bowman Creek. Some interesting plants in this riparian area are chain fern (*Woodwardia fimbriata*), sedges (*Carex* spp.), giant horsetail (*Equisetum telmateia* ssp. *braunii*) and a lush understory of snowberry (*Symphoricarpos albus* var. *laevigatus* and *S. mollis*), California honeysuckle (*Lonicera hispidula*), and blue elderberry (*Sambucus nigra* ssp. *caerulea*). The riparian area opens to a small meadow and then the serpentine area. We will walk along the edge of the serpentine, cross it, and return through bay, oak and buckeye woodland. Wild flowers we are likely to see include cream cups (*Platystemmon californicus*), longspur sea blush (*Plectritis ciliosa*), little spring beauty (*Claytonia exigua* ssp. *exigua*), tuberous sanicle (*Sanicula tuberosa*), annual yellow monkey flower (*Erythranthe nasuta*), hillside collinsia (*Collinsia sparsiflora* var. *sparsiflora*), dwarf plantain (*Plantago erecta*), blue dicks (*Dichelostemma capitatum* ssp. *capitatum*), valley tassels (*Castilleja attenata*), owl's clover (*Castilleja densiflora*), and poppies (*Eschscholzia californica*). Other interesting plants we'll see in the serpentine area are Leather Oaks (*Quercus durata*), and mountain mahogany (*Cercocarpus betuloides* var. *betuloides*)

The 2.5-mile loop is easy to moderate. There are wet patches along the Serpentine Fire Road. Waterproof hiking shoes or boots are useful. There is a steep, rocky uphill climb for one quarter mile. It is slippery due to rocks, mud, and puddles. [Read more . . .](#) [Meetup Registration Link](#)

Attend the Chapter Meeting on April 8 at 7:30 pm for an introduction to the area by Marin County Parks staff.



© Betsey Crawford

Lathyrus vestitus - common pacific pea
By Betsey Crawford



Collinsia sparsiflora var. collina - hillside collinsia
Bowman Canyon Photo by Susan Schlosser

More Field Trips

Mitchell Canyon, Mt. Diablo State Park

Monday, **April 29, 2024** - 10 am to 2 pm

Leader: **Suzanne Weakley**

Mitchell Canyon is one of the wildflower “hot spots” in the Bay Area. On this slow, easy 2-mile walk, we expect to see the rare (1B.2) Mt. Diablo fairy lantern (*Calochortus pulchellus*), along with many other spring wildflowers, hopefully including goldenbush (*Ericameria linearifolia*), broomrape (*Aphyllon fasciculatum*), blue witch (*Solanum umbelliferum*), virgin’s bower (*Clematis ligusticifolia*), colonial onion (*Allium unifolium*), Sacramento Valley buttercup (*Ranunculus canus*), yerba santa, wallflowers, blow wives, ookow, silver bush lupine, and more. And looking up, on the slopes of Mt. Diablo, we’ll see stands of beautiful gray pines (*Pinus sabiniana*).

The Mt. Diablo Interpretive Association publishes a wonderful online [Wildflower Guide](#). In addition, along the fire road there are ten numbered markers, which are described in this downloadable [Mitchell Canyon Trail Interpretive Guide](#)

[Read more. . .](#)

[Meetup Registration Link](#)



Calochortus pulchellus - Mt. Diablo fairy lantern
Photo by Suzanne Weakley

Kent Pump Road

Saturday, **May 4, 2024** - 10 am to 2 pm

Leader: **Eva Buxton**

Kent Pump Road offers a beautiful, gentle, and biodiverse hike through the Lagunitas Creek Watershed from Alpine Dam toward the upper reaches of Kent Lake. We will amble along this riparian corridor and enjoy the diverse vegetation of the area. Highlights will include forest understory plants, mossy rock outcrops, a rare lichen, and one undescribed wildflower known only from the surrounding area.

The hike is a shady out-and-back on a dirt surface with an easy difficulty-level. We will walk as far as we can in the allotted time, perhaps 1.5 miles each way at maximum. The Marin Chapter (CNPSmarin.org) has a plant list for area called [ALPINE DAM TO KENT LAKE PUMP ROAD, MMWD](#) which would be useful for those of you interested in the flora over several seasons. [Read more. . .](#)

[Meetup Registration Link](#)



Whipplea modesta - modesty
Photo by Michael Chasse

Mt. Hamilton Driving Tour with Stops and Short Walks

Sunday, **May 5, 2024** - 8:30 am to 5 pm

Leader: **Terry Gosliner**

Mt. Hamilton is the highest peak in the Bay Area at 4,265 feet and is part of the Diablo Range that extends from Mt. Diablo south to Orchard Peak in Kern County. This part of the inner Coast Ranges is typically much drier than our outer coast ranges in Marin. Mt. Hamilton has a great variety of habitats



Mentzelia lindleyi - Lindley's blazing star
Arroyo Bayo Photo by Terry Gosliner

More Field Trips

Mt. Hamilton, cont.

including many that are not found in Marin. As a result, it has a rich flora and is home to many species not found in Marin County.

Showy flowers like Lindley's blazing star (*Mentzelia lindleyi*) and the wind poppy (*Papaver heterophyllum*) are some of the spring beauties we will likely encounter. Some of the plants are restricted to Mt. Hamilton and endemic to the mountain such as the Mt. Hamilton Lomatium (*Lomatium observatorium*) found only around Lick Observatory and the Mt. Hamilton jewelflower (*Streptanthus callistus*) found in Arroyo Bayo. We will look at native herbs, trees, and shrubs in this picturesque area. After the LNU Complex Fire burned over much of the area in 2020, we may find many changes from our last field trip there in 2017.

This will be a full day trip. We will make several stops along Mt. Hamilton Road and do a bit of walking at a couple of places. Parking at the various stops along the road up Mt. Hamilton is limited. We will try to maximize the number of people in the cars, so there is enough space for all the cars at each stop up the mountain and down the other side into Arroyo Bayo and Del Puerto Canyon.

Terry Gosliner is a CNPS member and a Curator in the Department of Invertebrate Zoology and Geology at the California Academy of Sciences where he specializes in the evolution and systematics of nudibranchs (sea slugs).

While his research focuses on marine biology and often takes him to coral reefs in the Philippines, he has a life-long passion for native California plants. As a child he grew up in Marin and explored the plants of the Bay Area from an early age.

[Read more. . .](#)

[Meetup Registration Link](#)



Lomatium observatorium –
Mt. Hamilton lomatium
Photo by Terry Gosliner

The Cedars Conservation Area

Saturday, **May 25, 2024** - all day

Leader: **Roger Raiche**

Signups: **Ann Elliott** annonfire@gmail.com

The Cedars is an extraordinary place in and around the headwaters of Austin Creek that flows into the Russian River. The steep and rocky terrain has unique geological features, forested slopes, and seeps and springs; some portions have been compared to a moonscape. The Cedars can only be visited with guides and offers many rare sights.



The Cedars

Photo by Woody Elliott

The terrain is rugged, rocky, and involves creek crossings (without bridges) and climbs to a ridge, so participants should be in good hiking shape. High clearance vehicles are needed to access the trailhead.

[Read more about the Cedars](#) including the article about it in *Fremontia*.

[Read more. about this field trip.](#)

Citizen Science Opportunity!

Looking for native plant enthusiasts to help with data collection of post fire recovery from the 2020 Woodward Fire in Point Reyes National Seashore.

The study is documenting plant community change throughout the fire, as well as looking at areas that also burned in the Vision Fire in 1995. This strenuous work involves hiking into remote sections with a little bushwhacking. You will learn the target plants and see some beautiful areas of Pt. Reyes National Seashore.

April - June 2024. Dates TBD. Please contact Tanya Baxter for more information. baxterbotanical@gmail.com



Researcher tosses a measuring tape over coastal brush to make a straight line for survey.

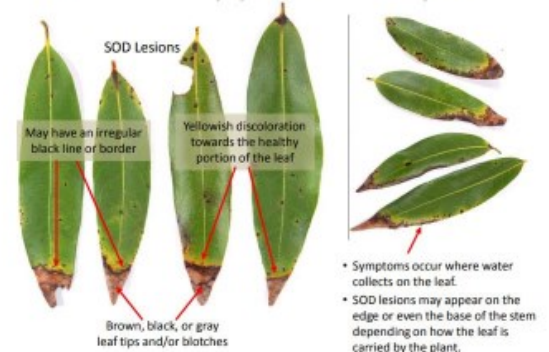
Communities Come Together Fighting Sudden Oak Death

Sudden Oak Death (SOD) is a serious exotic disease threatening the survival of tanoak and several oak species in coastal forests of California. SOD blitzes inform and educate the community about SOD and get local citizen scientists involved in early detection of the disease on bay laurel and tanoak leaves. Given the amount of rainfall in 2024, SOD is expected to be spreading and may have arrived or resurfaced at a site near you.

Volunteer for the Marin SOD Blitz **April 19 to 22, 2024.**

[Read more. . .](#)

Sudden Oak Death Symptoms on California Bay Laurel



Earth Day Event April 21 in Mill Valley

Sunday, April 21, CNPS Marin will join the Marin Master Gardeners and other nonprofit organizations for an environmentally focused day at the Mill Valley Community Center.

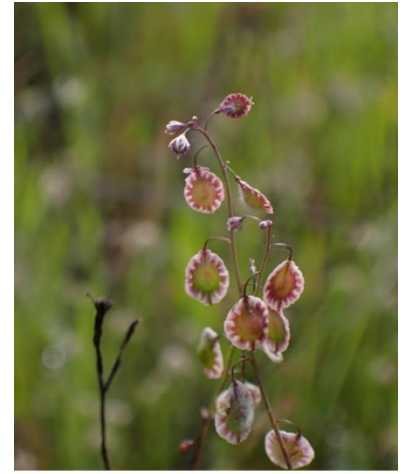
From 11 am to 2 pm Marin Chapter will have a table offering information about our mission, activities, and native plant gardening. We will be selling books and posters and helping Home Ground Habitat to sell plants. Attend or help us table. Free admission.

[Read more. . .](#)



Upcoming Marin Chapter Events

- 4/3 12:30 - 4:30 pm [Field Trip: Hoo-Koo-E-Koo](#)
- 4/4 6 pm [Online Plant Sale Opens](#)
- 4/8 6 pm [Online Plant Sale Closes](#)
- 4/8 7:30 pm [Chapter Meeting: Bowman Canyon](#)
- 4/13 10:30 am - 1 pm [Plant Sale Pickup - Bonair](#)
- 4/14 10 am - 2 pm [Field Trip: Bowman Canyon](#)
- 4/21 11 am - 2 pm [Tabling at Earth Day Mill Valley](#)
- 4/29 10 am - 2 pm [Field Trip: Mitchell Canyon, Mt. Diablo](#)
- 5/4 10 am - 2 pm [Field Trip: Kent Pump Road](#)
- 5/5 10 am - 4 pm [Field Trip: Mt. Hamilton](#)
- 5/25 all day [Field Trip: The Cedars](#)
- 6/1 tba Field Trip Tiburon Ridge
- 6/9 10 am - 2 pm Field Trip: Mt. Tamalpais with Robert Steers
- 8/24 CNPS Marin 50th Anniversary Event



Thysanocarpus curvipes -
fringe pod in Bowman Canyon
Photo by Susan Schlosser



Streptanthus callistus -
Mt. Hamilton jewelflower
Photo by Terry Gosliner

Other Activities in Marin and Nearby

- 4/4 5:30 pm [CNPS Naturehood Webinar: Introducing the New Calscape](#)
- 4/11 7:30 pm [Gardening to Feed Butterflies & Caterpillars](#) Yerba Buena CNPS Zoom talk.
- 4/13 12-4 pm **Spring Open House** at [Larner Seeds](#) in Bolinas, Tour at 2:30
- April 14, 21, 28 [Kite Hill Wildflower Preserve workshops](#) on restoring California grasslands
- 4/16 7:30 pm [Sonoma Co. Ag & Open Space, Land for Life](#) Milo Baker CNPS

Other Events, cont.

Be sure to periodically check [CNPS.org/events](https://www.cnps.org/events) for interesting talks and field trips sponsored by CNPS Chapters and staff throughout the state.

Below is a list of links to listings for Field Trips in nearby CNPS Chapters.

- [Milo Baker](#)
- [Napa Valley Chapter](#)
- [Yerba Buena Chapter](#)
- [East Bay Chapter](#)
- [Santa Clara Valley Chapter](#)

Also check the [Events Calendar for Marin County Parks](#). They host a variety of local hikes, service projects, and presentations.



Cypripedium californicum -
California Lady's Slipper
The Cedars by Woody Elliott

Share the Beauty and Knowledge

Check out the [pictures](#) of wildflowers and native plants being taken for our 50th Anniversary Challenges. Send me some of your best to share with the Chapter.

When you hear of events that might interest other members share them too.

Ann Elliott, Newsletter Editor annonfire@gmail.com



Lomatium dasycarpum -
woollyfruit desertparsley
Photo by Stacey Pogorzelski

Join/Renew

Donate



Marin Chapter
California Native Plant Society

[CNPS Marin Chapter Website](#)



CALIFORNIA
NATIVE PLANT SOCIETY

[CNPS Statewide Website](#)

Subscribe

Privacy

2707 K Street, Suite 1, Sacramento, CA 95816-5130 | Tel: (916) 447-2677

California Native Plant Society ©2023 All rights reserved.