

CALIFORNIA NATIVE PLANT SOCIETY MARIN CHAPTER

May 2023 Newsletter



Superbloom! pussy ears, mule ears, paintbrush - Chimney Rock, Pt. Reyes NS Photo by Ann Elliott

Marin Chapter May 2023 Meeting

"Monumental Opportunities: Molok Luyuk and Beyond"

Guest Speaker: **Nick Jensen**,
Conservation Program Director, CNPS

Monday, May 8 @ 7:30 pm

Molok Luyuk (Patwin for Condor Ridge) is a fabled area of botanical richness formerly known as Walker Ridge.

Located in Lake and Colusa Counties just west of Clearlake, the area is home to nearly 500 native taxa, more

than three dozen plants included in the CNPS Rare Plant Inventory and a bewildering array of habitats. Molok Luyuk is notable for its variety of habitats influenced by serpentinite, our state rock, from barren serpentine ridges to seasonal meadows dotted with showy wildflowers. The ridge is also of great cultural significance to Native Americans. As noted last year by Yocha Dehe Wintun Nation Tribal Chairman Anthony Roberts, Molok Luyuk is "steeped in thousands of years of rich history and is profoundly meaningful to the Patwin people."



Serpentine Ridge on Molok Yuluk

Photo courtesy of Tuleyome

Over the past couple of decades, the area has been targeted by several commercial wind development proposals, which threatened thousands of acres of irreplaceable habitats. These threats led CNPS and a growing number of allied organizations, members of the local community, and the Yocha Dehe Wintun Nation to pursue permanent protection of Molok Luyuk through federal legislation.

This year's H.R. 1396, authored by Representatives John Garamendi and Mike Thompson, and companion legislation, S.683, authored by Senator s Alex Padilla and Dianne Feinstein, seeks to ensure permanent protection of the ridge. The legislation would add a portion of the ridge to the adjacent Berryessa Snow Mountain National Monument, change the area's name officially to Molok Luyuk, and require cooperative management of the monument with Native American Tribes.

In his talk, CNPS Conservation Program Director, Nick Jensen, will discuss Molok Luyuk's botanical resources and the path forward, in 2023, to the ridge's permanent protection. The talk will also provide background on the historical and current use of the Antiquities Act, and the prospects for large-scale conservation in the coming months/years.

Biography: Nick Jensen currently serves as the Conservation Program Director for the California Native Plant Society (CNPS). In this position he oversees the conservation work of staff and volunteer advocates statewide. Nick's work involves state and federal legislative advocacy, project level work including presiding over litigation, participation in coalitions of environmental organizations, media relations, and supervising a team of talented conservation professionals.



Nick earned his BS degree in Environmental Horticulture at UC Davis, and recently completed his Ph.D. in botany at California Botanic Garden/Claremont Graduate University. As a graduate student Nick produced the first Flora of Tejon Ranch, documenting plant diversity on California's largest contiguous piece of private land. He also studied evolutionary patterns in perennial *Streptanthus* (jewelflowers). From 2006-2010, he was employed by CNPS, first as a Vegetation Program Assistant, and later as the Rare Plant Program Director. Nick has also worked as a botanist for the U.S. Forest Service, Chicago Botanic Garden, and the private consulting industry. He has taught botany classes to professionals and interested members of the public for CNPS, RSABG, the Jepson Herbarium, and Theodore Payne Foundation.

[Register for this Zoom meeting here.](#)

Marin Chapter Field Trips

Field Trip Guidelines:

- **Email to sign up for a field trip**, as we are limiting participants to 20.
- **Electronically sign** the CNPS Liability waiver for the trip (Susan will provide the link.)

Cascade Canyon Open Space Preserve (aka Elliot Nature Preserve)

Thursday, **May 11** - 10 am to 1 pm

Leaders: **Carolyn Longstreth and Linda Novy**

Email **Carolyn Longstreth** cklongstreth@gmail.com to sign up for this field trip.

This classic Marin County outing will start on the Cascade Fire Road, passing a few sargeant cypress (*Hesperocyparis* [formerly *Cupressus*] *sargentii*) individuals, and pipe vines, (*Aristolochia californica*) and then continuing on the High Water Trail to visit a rock outcropping where there are some less common species, including nude buckwheat (*Eriogonum nudum*) and Canyon live-forever (*Dudleya cymosa*).

After passing through an undisturbed oak-madrone woodland with many native understory species, including checker lily (*Fritillaria affinis*), the route will then rejoin the Cascade Fire Road and lead up to Cascade Falls along a stretch of San Anselmo Creek (also called Cascade Creek). Along the way, we'll see many creekside plants including Western Columbine (*Aquilegia formosa*), Hazelnut (*Corylus cornuta* var. *californica*), Gooseberry (*Ribes menziesii*), Seep monkeyflower (*Diplacus guttatus*), maidenhair fern (*Adiantum jordanii*) and others.

From Cascade Falls we will retrace our steps to the Cascade Fire Road. We may take a quick detour and ramble along the San Anselmo Creek Trail (a short stretch) for more of a riparian/forest ecotone and a creek crossing into a secluded bay forest area with a hillside of native fern species. Our return will be via the Canyon and Cary Camp Trails. This field trip will cover about 2.5 easy to moderately strenuous miles.

To avoid parking problems, the group will meet at Doc Egger Park at the base of Cascade Drive and carpool from there to Linda's house, which is near the trailhead, and park in her driveway.

To reach Doc Egger Park, take Sir Francis Drake Blvd. west from Highway 101 6 miles to the town of Fairfax. Turn left by the Fairfax sign on Pacheco Avenue. Then turn right immediately on Broadway. In one block, turn left on Bolinas Road; continue for 0.3 mile to the three-road intersection with the large brick pillars. Bear right-center onto Cascade Drive (the middle road) and look for a parking spot next to the Park.



Dudleya cymosa - canyon live-forever

Photo by John Longstreth



Fritillaria affinis - chocolate lily

Photo by Vernon Smith

Tour West Marin Monarch Sanctuary

Saturday **May 20**, 11am to 12:30 pm

To sign up for this tour, email marincnpsevents@gmail.com with name, cell phone and town you live in. Some walking involved; we will be carpooling there.

Ole Shell and his team have created an overwintering site for migrating Monarchs on his family's ranch in Bolinas. They will give us a tour and describe the building and function of his West Marin Monarch Sanctuary. They have also planted more than 1200 nectar plants to provide food for the overwintering adults. Join us to tour a great project that is helping our rapidly dwindling Monarch butterfly population.

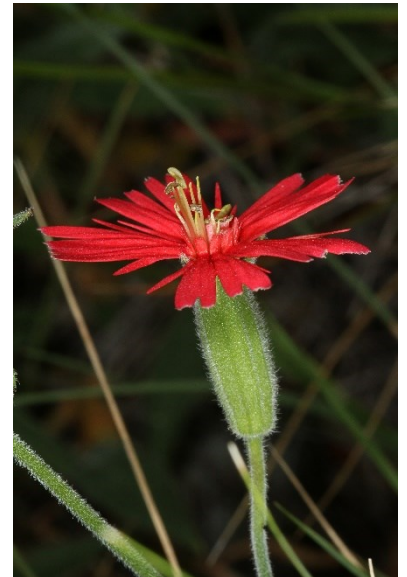


Old Stage Road to West Point Inn

Saturday, **May 27** - 10 am to 3 pm Leader: **Terry Gosliner**

Email **Susan Schlosser** scschlosser52@gmail.com to sign up for this field trip.

The route from the Bootjack Parking Lot requires a ¼ mile climb on a rocky trail to the relatively level Old Stage Road. We pass through mixed evergreen forest into a chaparral area that alternates between serpentine rock and greywacke sandstone with sharp contrast between the different rock and soil types. We will continue on about a mile and a half to the West Point Inn, before we head downhill via the Nora Trail to the Matt Davis trail along approximately 2 miles of moderate to difficult trail. The downhill portion is steep with numerous roots and streams crossings, followed by irregular, large stone steps back up to the Boot Jack Parking lot.



Interesting plants we may see include many serpentine endemics such as Jepson's Ceanothus (*Ceanothus jepsonii*), the Mt. Tamalpais manzanita (*Arctostaphylos montana* ssp. *montana*) and the serpentine Sargent cypress forest (*Hesperocyparis sargentii*). Other plants we may see are chaparral pea (*Pickeringia montana*) and yerba santa (*Eriodictyon californicum*). At a wonderful serpentine spring we should see blooming western Azalea (*Rhododendron occidentale*) and seep monkey flower (*Erythranthe guttata*). Many other chaparral species are evident such as the bush poppy (*Dendromecon rigida*) and we even pass by a small second growth grove of redwoods (*Sequoia sempervirens*). Numerous other surprises await us as we hike through this area of Mt. Tam's rich diversity.

Trail length round trip is approximately 4.0 miles with a bit of initial steep climb and steep, irregular downhill and switchbacks along the Nora Trail. Large stone steps on the Matt Davis Trail climb about 200 feet before returning to the Boot Jack Parking Lot.

Meet at the Bootjack parking/picnic and campground area. There is an \$8.00 parking fee.

Directions: From US 101 take the Stinson Beach exit at Mill Valley towards Stinson Beach. After 2.6 miles, veer right and up on to Panoramic Hwy towards Mt. Tamalpais and Muir Woods. Continue on Panoramic Hwy past the Muir Woods turnoff. Continue 4.1 miles to the Bootjack picnic area and campground parking lot. Proceed to the kiosk to pay your parking fee. Exact change is required. A bathroom and water are available at the parking lot.

Wilma Follette: Native Plant Champion

Host of Tuesday Taxonomy Trips and Wednesday Wildflower Walks

Mostly by *Kristin Jakob*

On March 24, CNPS bade farewell to one of the society's staunchest supporters and California native plants lost one of their most ardent champions.

Wilma was born and raised in Eureka, CA, a third generation Northern Californian. She spent her childhood summers together with multiple cousins on a family ranch, Shelter Cove, on the remote North Coast.

She was a student at Humboldt State in Eureka when the US entered the war, whereupon Wilma joined the war effort and enlisted in the Army Nurse Corps.

After the war, she enrolled at UC Berkeley, where she majored in Political Science with a minor in Russian language. UC Berkeley is where she met future husband, Bill Follette, a student and war veteran, and fellow member of the Cal photography club. They were married for 70 years until Bill's death in 2018. Wilma says she knew "he was the one" when she first met him in the photography club. Bill says he found her ownership of a photographic enlarger a deal clincher for him. The enlarger became a household essential, deployed to produce the annual family photo Christmas card for 22 years until color prints were adopted. Bill accompanied Wilma on most of her botanical excursions and took over 15,000

The Follettes resided from 1956 in Terra Linda, where Wilma and Bill raised a son and four daughters, then moved in 1970 to Sausalito.

Wilma completed her Russian studies at San Francisco State, earning her Masters in Russian Studies in 1988, and in 1987 published a translation of the journal of Russian scientist and explorer of the California North Coast, The odyssey of a Russian scientist : I.G. Voznesenskii in Alaska, California, and Siberia, 1839-1849 by A.I. Alekseev.



Wilma's contributions to CNPS State and the Marin Chapter were huge. She helped to found the Marin Chapter in 1973 and for about 30 years, each spring from March-May, Wilma led regular alternate weekly Tuesday Taxonomy Trips and Wednesday Wildflower Walks throughout Marin County on behalf of CNPS. She also helped to compile plant lists and monitor rare-listed species for public agencies. For 11 years Wilma taught a plant identification classes through College of Marin, where she first learned the county's plants. In 1979 she launched the highly successful and popular poster series for CNPS, working with several California artists to create the artwork, overseeing printing and helping organize volunteers to distribute six large-format wildflower posters, and a poster/placemat set displaying

California grasses, both native and introduced. The posters have generated sales of over a million dollars over the years for the organization.

In April 2011 Wilma was presented with the Peter Behr Lifetime Achievement Award by the Marin Conservation League, and in 1985 was named a CNPS Fellow, the highest recognition CNPS awards its member volunteers. She even served as Chair of the Fellows Committee.

Within the Chapter, Wilma co-authored the Point Reyes National Seashore Plant Checklist in 1990, then spearheaded the much-needed 2007 revision of John Thomas Howell's Marin Flora and co-authored its text with Frank Almeda (of the California Academy of Sciences) and Catherine Best, retaining Howell's comments and poetry. This revision was co-published by CNPS Marin and the Cal Academy.



Wilma and Bill Follette
Photo by Julie Follette

Paul da Silva shares some memories of Wilma:

When Wilma decided to learn the plants of Marin, she enrolled in Al Molina's botany class at the College of Marin. In preparation, she bought the assigned text, an older version of Tom Howell's Marin Flora. Curious about what was in it, she opened it up and was mystified. As she later recounted with a twinkle in her eye, "I knew it was trying to tell me something, but I had no idea what it was."



Thomas Howell's 75th B-day hike.

Wilma Follette is to the right, Irene Biagi is to the left of Howell.

Of course, she did master not only the book called Marin Flora, but also the real flora of Marin, so much that she became a driving force behind the book's latest revision. As she explained later, the revision process was a long one. She dedicated one day of every week to the task, going over the first two editions, Howell's later notes, and many herbarium specimens with the other members of the revision team. She was a strong voice in favor of keeping Howell's original poetry that is sprinkled throughout the volume and one of its hidden delights.

She was always using her charm and skills of persuasion to interest more people in our native plants and our CNPS chapter, whether it was on her weekly walks, in the community, or as chair of the chapter's Nominating Committee. One of her favorite phrases was, "Our native plants need all the friends they can get."

In honor of her ninetieth birthday, she led a hike on which she stopped at intervals to recite botanical poetry. About halfway through the hike, her younger friend Phyllis Faber became concerned that she was tiring and suggested that she accept a ride to the picnic site. She immediately faced forward, making clear that others could do that if they wanted, but that she would walk to the finish. This was reminiscent of one of her favorite phrases during her weekly walks. Often after she had bent down to identify a plant, she would find that other members of the group had gone ahead. "I must get up," she would say, "For there go my people, and I am their leader."

Native Plant Gardening Group

The Native Plant Gardening Group is planning its first events. Several visited Dave's garden. May 3 will be our first Zoom meeting to share experiences and get to know each other. You can join the group by answering this [short questionnaire](#).



2023 Eco-Friendly Garden Tour

May 13 from 10 am to 4 pm

Hosted by the Sonoma-Marín Saving Water Partnership, this self-guided tour includes 17 inspirational gardens throughout Sonoma and Marin counties, including the personal gardens of local landscape designers, architects, and garden enthusiasts. Learn from the pros and get fresh ideas for future landscaping projects.

The gardens focus on California native plants, adapted to our frequent drought conditions. Garden hosts will offer ideas for creating and managing sustainable, low-water-use gardens. Seven gardens are in Marin. Many of the Sonoma gardens belong to Milo Baker Chapter members.

Included are these bonus events:

- Milo Baker Chapter CNPS Plant Sale @ Laguna Foundation at 900 Sanford Road, Santa Rosa.
- Plant sale at one of the Novato gardens.
- Free compost from Zero Waste Sonoma at one of the gardens, bring your truck and shovel!

Register for this free tour at savingwaterpartnership.org.

[Read more...](#)

Ember Stomp - May 20, 2023

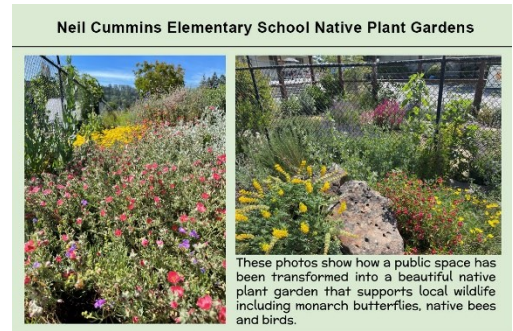
Join Marin CNPS at 2023 Ember Stomp - Marin's Wildfire Prevention Festival. We will have a table from 11-5 pm, so come visit us to learn about fire-resistant California native plants to include in your landscaping. Ember Stomp is fun for the whole family! This FREE festival is all about bringing the community together to lower our risk of wildfire in Marin. Don't miss this day of learning and fun on May 20th at the Marin Civic Center Fairgrounds.

[Read more...](#)

Ring Mountain Docents Make a Difference

In March, Ring Mountain Wildflower Docent pioneers enjoyed an enthusiastic beginning when, on day 1, over 3 dozen hikers, dog enthusiasts, bikers and climbers stopped by our table to get information and view magnified photos of the serpentine ridge's blooming endemic rarities. In addition, the docents found that teaching is a great opportunity to learn!

Earlier in the year, Marin County Parks and Marin CNPS offered on-line and in-field training to docents for Ring Mountain Open Space. Taking knowledge from botanists familiar with serpentine, docents will share those insights with visitors. Raising visitor awareness and appreciation of Ring Mountain's treasures will help to protect them, especially considering the draw of this year's super bloom.



Borrow a Weed Wrench!

Before the ground dries completely, borrow the Chapter's weed wrenches to pull broom and other fire-prone weedy bushes.

Borrow up to seven wrenches in three sizes, including one large wrench weighing 16.5 lbs. with a jaw capacity of 2.5 inches.

Contact: Eddie Robertson ebulletinmarincnps@gmail.com

[Read more...](#)



Upcoming Marin Chapter Events

- 5/3 7 pm Native Plant Garden Group Zoom meeting [Join the Group](#)
- 5/8 7:30 pm Chapter Meeting: [Monumental Opportunities: Molok Luyuk and Beyond](#) Guest Speaker: **Nick Jensen**
- 5/11 10 am Field Trip: [Cascade Canyon](#), Leaders: **Carolyn Longstreth and Linda Novy**
- 5/20 11 am Tour West Marin Monarch Sanctuary
- 5/27 10 am Field Trip: [Old Stage Road to West Point Inn](#), Leader: **Terry Gosliner**



Quercus agrifolia - coast live oak catkins
Photo by Stacey Pogorzelski

Other Activities in Marin and Nearby

- 5/5 & 5/20 10 am - 2 pm [Kent Island Restoration](#)(s) at Bolinas Lagoon
- 5/6 9 am - noon [Broom Busters of Old St. Hilary's](#)
- 5/7 - 3:30 pm [Art Reception - Kristin Jakob](#) at Book Passage, Corte Madera
- 5/7 10 am - 1 pm [Family Walk: Stafford Lake](#)
- 5/9 10 - 11:30 am [Senior Stroll: Earthquake Trail](#)
- 5/9 5:30 pm CNPS Native Gardening 101: [Milkweed, Monarchs, & You](#) (Zoom)
- 5/11 7:30 pm [Digitizing California Herbarium Species at Cal Academy](#) w/ Dr. Sarah Jacobs, Yerba Buena Chapter (Zoom)
- 5/14 noon - 2 pm [Junior Ranger: Mother's Day Flowers](#)
- 5/14 & 5/15 9 am - noon [Horse Hill Broom Bust\(s\)](#)
- 5/16 10 am - 2 pm [Loma Alta: Birds and Flowers](#)
- 5/20 11 am - 5 pm [Ember Stomp 2023!](#)



Lupinus arboreus - coastal bush lupine (blue) Tomales Bay Trail
Photo by Ann Elliott

- 5/21 9 am - noon [Hal Brown Park Sheet Mulching](#)
- 5/24 10 am - 2 pm [Abbotts Lagoon](#)
- 5/31 10 am - 3 pm [Rare Plants of the Tiburon Peninsula](#)
- 6/1 5:30 pm CNPS Native Gardening 101: [Get Rid of Garden Pests the Natural Way](#) (Zoom)
- [Milo Baker Chapter \(Sonoma Co.\) Plant Walks](#)
- [Napa Valley Chapter Field Trip Calendar](#)
- [Yerba Buena \(SF\) Chapter Field Trips](#)



Equisetum telmateia - giant horsetail & beach strawberry
Palomarin by Ann Elliott



Superbloom! Checker bloom, goldfields, larkspur, blue eyed grass - Chimney Rock, Pt. Reyes NS Photo by Ann Elliott

Chapter Newsletter Needs Your Input

Please email me details of upcoming events related to native plants. Also, please send me any photos from your wild explorations in Marin to share with our readers.

Ann Elliott, Newsletter Editor annonfire@gmail.com

[Join/Renew](#)

[Donate](#)



[CNPS Marin Chapter Website](#) | [CNPS Statewide Website](#)

2707 K Street, Suite 1, Sacramento, CA 95816-5130 | Tel: (916) 447-2677
California Native Plant Society ©2022 All rights reserved.