

CALIFORNIA NATIVE PLANT SOCIETY MARIN CHAPTER

April 2023 Newsletter



Lasthenia californica - goldfields Estero Americano

Photo by Ann Elliott

Marin Chapter April 2023 Meeting

"Creating a Bee, Butterfly and Bird Restaurant and Building Community Along the Way"

Guest Speaker: **Jennifer Dirking**, Wildflower Ambassador
Santa Clara Valley Chapter

Monday, April 10 @ 7:30 pm

Is your garden a 'bar' that only offers nectar to adult butterflies but no food for their offspring? Do the birds and bees visiting your garden have everything they need to raise the next generation? Learn how you can create a "Bee, Butterfly and Bird Restaurant" by growing the 'keystone plants' that feed your local ecosystem. In the process, you can:

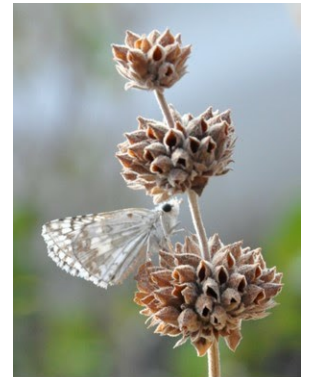
- Attract more bees, butterflies and birds to your garden
- Boost your fruit and vegetable yields
- Help save local species that are in decline
- Engage with neighbors to build back habitat throughout your community

Join us for this lively discussion as we explore opportunities to boost biodiversity in our own gardens and simple ways we can educate and engage others.

Jennifer Dirking has been an organic gardener for over 40 years, but only recently transformed her garden from a food desert to a habitat oasis in her suburban San Carlos neighborhood. Inspired by Doug Tallamy's "Nature's Best Hope," she has reached beyond her garden fence to develop partnerships and inspire hundreds of others throughout the Bay Area to begin their own native gardening journey. Her

simple tactics involving free wildflower seeds and promotion via social media provide a model for other individuals and organizations that want to reach further into their communities as well. She is currently the Chair of the Wildflower Ambassador program at the CNPS-Santa Clara Valley Chapter. This group of 25 volunteers has distributed over a thousand native wildflower seed packets with informational handouts to date.

[Register for this Zoom meeting here.](#)



Common checkered skipper on
Salvia Photo by Jennifer Dirking



Grindelia sp. with leaf cutter bee
Photo by Jennifer Dirking



Spring 2023 Plant Sale

It's planting time! We are holding an online plant sale in April with order pickup in Greenbrae the following Saturday.

Species we will be offering include cobweb thistles, three colors of hybrid Pacific iris, foothill penstemon, checkerbloom, rosilla (sneezeweed), woolly blue curls, seep monkeyflower, yarrow, sundew poppy, wind poppy, yellow-eyed grass, mugwort, and deer grass. *Lippia nodiflora*, a great groundcover for full sun, will be available in flats. Flowering shrubs include many different types of ceanothus, black sage, Brandegeii's sage, California buckwheat, Nevin's barberry, Pacific ninebark, spice bush, snowberry, twinberry, buttonwillow, and Dr. Hurd manzanita.



Artemisia douglasiana - mugwort (William Follette)

Online Plant Sale Opens: Wednesday, **April 5 at 6 pm**
Online Plant Sale Closes: Monday, **April 10 at 6 pm**
Order pickup at Bon Air: **Saturday, April 15, 10:30 am to 1:00 pm**

[Read more...](#)

Tour of Home Ground Habitats Nursery

For CNPS members only

Saturday, **April 1** - 10:30 am - noon.

Join us for a tour of [Home Ground Habitats Nursery](#) in Novato. Charlotte Torgovitsky has built out a one-acre nursery and growing ground that is a delight to visit. The site includes a pond, fruit orchard, planting beds featuring groupings of natives, and thousands of plants her team is carefully cultivating, many of which will be offered at our spring sale. She'll showcase what's growing and talk about how to choose the right plant for the needs of your site.



Home Ground Habitats flower bed

Photo by Laura Lovett

Limited to 15, but a few slots left. Be sure your CNPS membership is up to date!
RSVP to marincnpsevents@gmail.com

Native Plant Gardening Roundtable

Are you an active native plant gardener? Do you dream of a beautiful pollinator garden or converting your thirsty lawn?

We are gathering a community of native plant gardeners to answer questions, share knowledge, and just connect. Over thirty gardeners have expressed interest.

You can join the group by answering this [short questionnaire](#).



Photo by Janet Pearce

Marin Chapter Field Trips

Field Trip Guidelines:

- Email **Susan Schlosser** at scschlosser52@gmail.com to sign up for a field trip, as we are limiting participants to 20.
- **Electronically sign** the CNPS Liability waiver for the trip (Susan will provide the link.)

Loma Alta from Big Rock

Thursday, **April 13** - 10 am to 2 pm

Leader: **Dabney Smith**

An early spring visit to Loma Alta includes magnificent vistas and wildflowers. Views include grasslands, serpentine, ravines, ridges, valleys, and San Francisco Bay. The lower part of the fire road has many native wildflowers typical of serpentine. Loma Alta Fire Road continues along the ridge and goes uphill for two miles, gaining about 1000 feet (650 to 1592 feet). The climb is easy to moderate. The fire road climbs, then levels off, etc. It is a pleasant climb as the views all around keep expanding. Wildflowers we may see include red maids (*Calandrinia ciliata*), rock lettuce (*Dudleya cymosa* ssp. *cymosa*), wild cucumber (*Marah fabacea*), Popcorn flower (*Plagiobothrys nothofulus*), False lupine (*Thermopsis californica*), Purple-flowered blue-eyed grass (*Sisyrinchium bellum*), Checker-bloom (*Sidalcea malviflora* ssp. *laciniata*), wild strawberry (*Fragaria vesca*), and Ithuriel's Spear (*Tritelia laxa*).

[Read more. . .](#)

Bowman Canyon

Tuesday, **April 25** - 10 am to 2 pm

Leaders: **Susan Schlosser & Carolyn Longstreth**

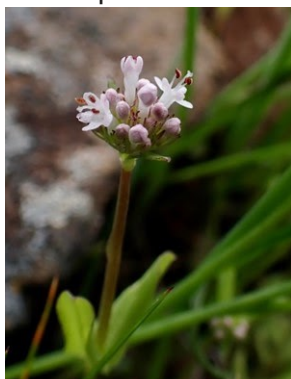
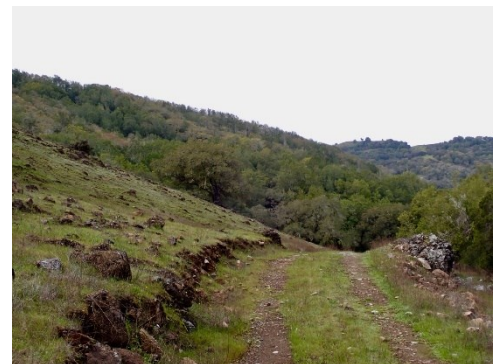
Bowman Canyon is a recently acquired addition to Mount Burdell Open Space. It includes riparian, grassland, woodland and serpentine habitats. We will observe plants in these habitats along the Serpentine and WB-03 Fire Roads. The 2.5-mile loop is easy to moderate except for a steep, rocky uphill climb for about ¼ mile. This portion is slippery because of rocks, mud and puddles. The first part of the field trip passes through a bay, oak and buckeye forest along Bowman Creek and then opens to the large serpentine area. We will walk along the edge of the serpentine, cross it, and return through bay, oak and buckeye woodland. Wild flowers we are likely to see include cream cups (*Platystemon californicus*), longspur sea blush (*Plectritis ciliosa*), little spring beauty (*Claytonia exigua* ssp. *exigua*), tuberous sanicle (*Sanicula tuberosa*), common yellow monkey flower (*Erythranthe guttata*), hillside collinsia (*Collinsia sparsiflora* var. *sparsiflora*), dwarf plantain (*Plantago erecta*), blue dicks (*Dichelostemma capitatum* ssp. *capitatum*), and possibly clarkias (*Clarkia* spp.).



Loma Alta
Photo by Susan Schlosser



Sidalcea malviflora ssp. *laciniata*
Loma Alta Photo by Susan Schlosser



Plectritis ciliosa - longspur sea
blush Photo by Susan Schlosser

[Read more. . .](#)

Join the 2023 SOD Blitz Marin!

SOD stands for Sudden Oak Death; it is a deadly plant disease caused by the invasive pathogen *Phytophthora ramorum*, killing millions of trees in coastal California. The SOD Blitz is an annual “citizen science” event to collect data, as well as inform and educate local communities about Sudden Oak Death.

Marin SOD Blitz volunteers will complete their surveys between from **April 21 to April 25**.

[Read more. . .](#)

Borrow a Weed Wrench!

Take advantage of the continuing rain that keeps our soils moist. Borrow the Chapter's weed wrenches to pull broom and other fire-prone weedy bushes.

Borrow up to seven wrenches in three sizes, including one large wrench weighing 16.5 lbs. with a jaw capacity of 2.5 inches.

Contact: Eddie Robertson ebulletinmarincnps@gmail.com

[Read more. . .](#)

Upcoming Marin Chapter Events

- 4/1 10:30 am Members Only [Tour of Home Ground Habitats Nursery](#)
- 4/5 to 4/10 [Spring Plant Sale](#) online
- 4/10 7:30 pm Chapter Meeting: [Creating a Bee, Butterfly and Bird Restaurant and Building Community Along the Way](#) Guest Speaker: **Jennifer Dirking**
- 4/13 10 am Field Trip: [Loma Alta from Big Rock](#), Leader: **Dabney Smith**
- 4/15 10:30 am - 1 pm [Spring Plant Sale Order Pickup](#) at Bon Air
- 4/25 10 am Field Trip: [Bowman Canyon](#), Leaders: **Susan Schlossar & Carolyn Longstreth**

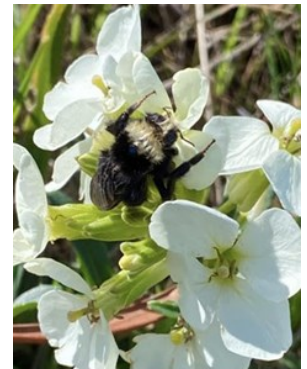
Please Submit Chapter News

Please email me details of upcoming events related to native plants. Also, please send me any photos from your spring explorations in Marin to share with our readers.

Ann Elliott, Newsletter Editor annonfire@gmail.com



Umbellularia californica - California bay with evidence of Sudden Oak Death (SOD)



Erysimum concinnum - wallflower
Chimney Rock by Delyne Cullen



Vaccinium ovatum - evergreen huckleberry
Inverness Ridge, Pt Reyes Photo by Ann Elliott
April 2023

Other Activities in Marin and Nearby

- 4/1 9 am - noon [Broom Busters of Old St. Hilary's](#)
- 4/2 10 am - 2 pm [Deer Island Preserve](#)
- 4/4 10 am - 2 pm [Baltimore Canyon](#)
- 4/6 5:30 pm CNPS Native Gardening 101: [Super\(blooming\) Bouquets](#) (Zoom)
- 4/7 & 4/22 10 am - 2 pm [Kent Island Restoration](#)(s) at Bolinas Lagoon
- 4/9 & 4/10 9 am - noon [Horse Hill Broom Bust\(s\)](#)
- 4/12 10 am - 2 pm [Ring Mt. Wildflowers](#)
- 4/13 7:30 pm [Western Sword Ferns and reports of Die-off](#) w/ Dr. Tom Billo, Yerba Buena Chapter (Zoom)
- 4/15 11 am - 12:30 pm [Tiburon Uplands Hike](#)
- 4/16 10 am - 2 pm [Mt. Burdell Wildflowers](#)
- 4/18 10 am - noon [Senior Stroll: Escalon Fire Road](#)
- 4/21 to 4/25 [Marin SOD Blitz](#)
- 4/23 9 am - noon [Earth Day at Hal Brown Park](#)
- 4/25 10 am - 2 pm [Chimney Rock Wildflowers](#)
- [Milo Baker Chapter \(Sonoma Co.\) Plant Walks](#)
- [Napa Valley Chapter Field Trip Calendar](#)
- [Yerba Buena \(SF\) Chapter Field Trips](#)



Rubus spectabilis - salmonberry
Inverness Ridge, Pt Reyes Photo by Ann Elliott



Limnanthes douglasii ssp. *sulphurea* - Point Reyes
meadowfoam Photo by Woody Elliott

[Join/Renew](#)

[Donate](#)



[CNPS Marin Chapter Website](#) | [CNPS Statewide Website](#)

2707 K Street, Suite 1, Sacramento, CA 95816-5130 | Tel: (916) 447-2677
California Native Plant Society ©2022 All rights reserved.