

View as a Web Page

# CALIFORNIA NATIVE PLANT SOCIETY MARIN CHAPTER

*June 2022 Newsletter*

**June Chapter Meeting**

**Monday June 13, 2022 @ 7:30 pm** (Pacific Time)

## Fostering Diverse Resilient Bayland/Wetland Habitats in the Face of Sea Level Rise and Climate Change

**Online Zoom Presentation**

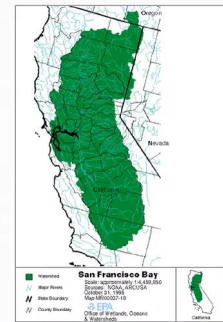
**Guest speaker:**

**Christina Toms**

Ecological Engineer and Senior Scientist with the San Francisco Bay Regional Water Quality Control Board and Member of CNPS Board

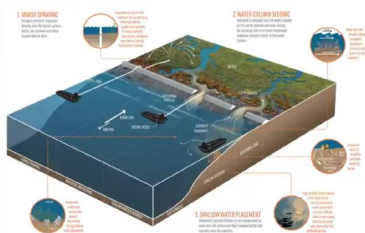
### San Francisco Estuary

- Watershed: ~60,000 square miles
- Largest estuary on the Pacific Coast
- 50% of California's freshwater
- ~90% of California's coastal wetlands
- Over 7 million people (Bay Area), drinking water for 25 million



### Embracing Uncertainty

- Recognize that we live in a colonized, urbanized, highly modified estuary



Climate change threatens the health, biodiversity, and resilience of San Francisco Estuary's tidal wetlands, including its native plant communities, through multiple mechanisms including sea level rise and changes in the timing, intensity, and duration of watershed runoff. Effective conservation and restoration of these ecosystems requires a

long-term, landscape-scale perspective that considers the physical and ecological processes that support native plant biodiversity. This talk will present a scientific framework for CNPS members to help them understand and advocate for these amazing ecosystems within the broader context of climate change adaptation.

Christina is an ecological engineer and senior scientist with the San Francisco Bay Regional Water Quality Control Board, where she specializes in the protection and restoration of aquatic ecosystems, especially estuarine wetlands. Her interest in native plants was fostered during long childhood bike rides exploring the unique botanical riches of her native New Jersey Pine Barrens. An avid mountain biker and hiker, she lives with her husband Brian, daughter Sierra Grace, and a small but mighty native plant garden in Santa Rosa, CA.

[Read more. . .](#)

---

## Please register in advance for this Zoom meeting.

[Click Here to Register](#)

You may also enter this link in your browser window to register:

[https://cnps-org.zoom.us/meeting/register/tZYodOusrz8sHtN\\_F9yEMpSy2h\\_v8QC\\_002i](https://cnps-org.zoom.us/meeting/register/tZYodOusrz8sHtN_F9yEMpSy2h_v8QC_002i)

After registering, you will receive a confirmation email containing information about joining the meeting.

---

**Frédérique Lavoipierre**, Author of *Garden Allies* had to postpone her talk because of a family illness.

---

**Managing Muting, Video, and Chatting During a Zoom Meeting**

# Marin Chapter Field Trips

## Field Trip Guidelines:

- **Email Susan Schlosser** at [scschlosser52@gmail.com](mailto:scschlosser52@gmail.com) to sign up for a field trip, as we are limiting participants to 20. (For Chapter Council weekend field trips please contact Ann Elliott [annonfire@gmail.com](mailto:annonfire@gmail.com))
- **Electronically sign** the CNPS Liability waiver for the trip (Susan will provide the link.)



Struthiopteris spicant - deer fern - Ann Elliott

\*\*\*\*\*

## Chimney Rock, Point Reyes National Seashore

Friday, June 3, 2022 - 2 to 5 pm

Leader: Ann Elliott

As we enjoy breathtaking views of the ocean from the coastal bluffs along the outer reaches of the Point Reyes Peninsula, we will look for the lingering spring wildflowers and emerging summer blooms.



Meet at the Chimney Rock Trailhead in Point Reyes National Seashore. Those interested in carpooling can meet at the Whitehouse Pool parking lot along Sir Francis Drake (just before it makes the turn up Tomales Bay) at 1:20.

Easy walk, fairly flat, about 1.9 miles. Add another .6 to go to the elephant seal overlook. Contact Ann Elliott to sign up for this trip. [annonfire@gmail.com](mailto:annonfire@gmail.com)

\*\*\*\*\*

## Abbott's Lagoon Trail and Dunes, Point Reyes National Seashore

Sunday, June 5, 2022 - 10 am to 2 pm

Leaders: Paul da Silva & Carolyn Longstreth

Abbott's Lagoon at Point Reyes National Seashore is of special interest to CNPS for several reasons. It has a remarkable diversity of plant habitats. Marsh, coastal scrub, headlands and coastal dune are in close proximity and easily accessible. It also has several rare plant species that may be found at this time of year. Furthermore, recognizing the severe threats facing the dune habitat from invasive plant species, the National Park Service has made this habitat a priority for restoration, and has mounted strong campaigns to remove the most important invasive plants, in which many CNPS members have participated. The dune habitat will be the major focus of this trip, although some of the other habitats may be visited as well.



*Abronia latifolia* - yellow sand verbena  
By Ann Elliott

Contact Ann Elliott to sign up for this trip. [annonfire@gmail.com](mailto:annonfire@gmail.com)

---

## Wildflowers of Ring Mountain Preserve

Sunday, June 5, 2022 - 3 to 5 pm  
Leader: Kristin Jakob

This annual outing showcases several of this Marin County Open Space preserve's rare plants, including Tiburon mariposa lily (*Calochortus tiburonensis*), found only at this location, and Marin dwarf flax (*Hesperolinon congestum*). Other lovely flowers we can expect to see include Ithurriel's spear (*Triteleia laxa*) and farewell-to-spring (*Clarkia rubicunda*). Starting at 4 p.m. participants will be treated to the delightful sight of clouds of the whitish starry flowers of soap plant (*Chlorogalum pomeridianum*) which seem to hover over the grasses. The many notable native, and relatively few non-native grasses will also be appreciated on



*Calochortus tiburonensis* - Tiburon mariposa lily  
By Vernon Smith



this ramble.

The top of the ridge affords 360-degree views, and serpentine rock outcroppings host an array of interesting plants.

A plant list is available on the CNPS Marin Chapter website. [Plant List](#)

Meet at the top end of Westward Drive, off Paradise Drive in Corte Madera, a few blocks east of the Paradise Shopping Center (comestibles and restrooms are available at Nugget Markets). Latecomers will easily find our group higher up the trail that starts at the end of Westward. Contact **Ann Elliott** to sign up for this trip. [annonfire@gmail.com](mailto:annonfire@gmail.com)

\*\*\*\*\*

## Carson Ridge

Tuesday, June 21, 2022 - 9 am to 1 pm  
Leader: Sherry Adams

Serpentine is less than 2% of the land area of California but accounts for about 15% of the rare plants. Join me for a walk on Carson Ridge through serpentine chaparral. We'll meet at the Azalea Hill parking area, on Bolinas-Fairfax road, 4 miles from Fairfax. I'm tentatively planning a loop hike of 3.5 miles, out Pine Mountain Fire Road, Oat Hill Fire Road, Old Sled Trail and then back to the parking area. However, if we are enjoying a slower pace we can make it a shorter out and back hike. There is some up and down on the whole loop, but the first half mile is fairly flat for those who want to just join us for the first bit and skip the climbing.



*Quercus durata*  
photo by Vernon Smith

This is a great place to learn serpentine-specialist shrubs - leather oak, Jepson's ceanothus and Mt. Tam manzanita which are distinctive year-round. Our timing is good for the late season serpentine herbs such as rosin-weed and the rare Mt Tam lessingia. We'll also have a chance to take our lunch break in the shade of one of the few serpentine-specialist trees - Sargent cypress (*Hesperocyparis sargentii*).

This is a fairly exposed walk and it can be quite warm and sunny. I recommend a sun hat, plenty of water, and a lunch. Hiking poles are a good idea, and there are plenty of little plants to see, so close focus binoculars can be helpful if you have them. We will meet at the Azalea Hill parking area, on the Bolinas-Fairfax road, 4 miles from Fairfax. We'll plan to be back to the vehicles by 1pm. Contact **Susan Schlosser** to sign up for this trip. [scschlosser52@gmail.com](mailto:scschlosser52@gmail.com)

If you'd like a refresher on serpentine, there are a couple of articles in this older edition of [Fremontia](#).

# Volunteer Opportunities:

## Removing Yellow Star Thistle from Mt. Burdell - with Persistence We Will Prevail

A small yet dedicated group met Saturday May 14th to remove invasive yellow star thistle, *Centaurea solstitialis*, from two areas on Mount Burdell. CNPS is partnering with Marin County Open Space District in some invasive plant removal work parties in Novato. The yellow star thistle, surprisingly easy to pull in most cases, was just starting to flower and we were able to pull all the flowering individuals that we could find. We need to return several times over the next several months as more plants start to flower. Yellow star thistle is a late bloomer! **If you are interested to participate in this effort** (or other work parties in Novato that are yet to be planned) please contact **Stacey Pogorzelski** by email at [staceypogo@gmail.com](mailto:staceypogo@gmail.com).



Work Party Removing Yellow Star Thistle from Mt. Burdell By David Fiol

[Check here for more volunteer opportunities.](#)

---

## Field Trip Reports Photos by: Susan Schlosser

### Kent Pump Road May 8



*Aquilegia formosa* - western columbine  
Kent Pump Road By Susan Schlosser



*Aphyllon purpureum* - sedum spathulifolium  
Kent Pump Rd. By Susan Schlosser



new *Streptanthus* sp.  
Kent Pump Rd. By Susan Schlosser

\*\*\*\*\*

### Old Stage Road May 21



serpentine seep along Old Stage Road  
on Mt. Tamalpais By Susan Schlosser

---

# CNPS Chapter Council Meeting: Saturday June 4, 2022

Marin Chapter is honored to host the first hybrid statewide [CNPS Chapter Council Quarterly Meeting](#) since the pandemic. Location: The Dance Palace in Pt. Reyes Station.



*Aesculus californica* - California buckeye  
Showing just terminal flower open. By Ann Elliott

---

## Chapter Council Dinner Speaker

June 4, 2022 @ 7 pm - Saturday in person & via Zoom  
Speaker: David Greenberger, Marin Botanist, Rare Plants Chair Marin Chapter  
Title: **North Bay Area Rare Plants – A photo tour by county.**

This talk will take viewers on a whirlwind trip around the North Bay Area, presenting photography and commentary on rare species ranging from the iconic to the very obscure. He will spotlight several plants in each county.

David Greenberger is fortunate to work as a botanist and conservationist on Mt. Tamalpais, a small coastal peak in Marin County whose watersheds cradle a flora of over 1,000 species. He has spent the last seven plus years with the Golden Gate National Parks Conservancy and has also done stints with the Marin Municipal Water District and Point Blue Conservation Science. He serves as Rare Plant Chair for CNPS Marin Chapter. His plant expertise centers in the San Francisco Bay Area, but he is obsessed with biodiversity, novelty, and rarity across the state and beyond.



*Arctostaphylos montana* ssp. *montana* -  
Mt. Tamalpais manzanita By Vernon Smith

To listen in person at the Dance Palace in Point Reyes Station sign up with this [Google link](#).

To listen via Zoom register at this [Zoom link](#).

---

## CNPS 2022 Conference - Rooting Together

Oct. 20-22, 2022 San Jose  
Workshops & Field Trips Oct. 18-19  
Topics: Plant Science, Conservation, Horticulture, Education  
Registration opens in June.  
[Read more...](#)



## Other CNPS Events and Issues

- Check out [CNPS Summer Workshops](#)
- Advocate for adequate funding for California's 30x30 Initiative [Read more...](#)
- AB 2146, California's Pollinator Protection Act, passed the Assembly on May 23. This important bill would limit the use of neonic pesticides in California. Neonics are devastating to pollinators like bees and butterflies and leach into soil and groundwater. [Read more...](#)  
Please contact CA State Senator Mike McGuire asking him to support this bill as it passes through the CA State Senate. [senator.mcguire@senate.ca.gov](mailto:senator.mcguire@senate.ca.gov)



## Upcoming Marin Chapter Events

- 6/3 2 pm Field Trip [Chimney Rock](#) - Point Reyes NS
- 6/4 7 pm Chapter Council Dinner Speaker [David Greenberger](#)
- 6/5 10 am Field Trip [Abbott's Lagoon](#) - Point Reyes NS
- 6/5 3 pm Field Trip [Wildflowers of Ring Mountain](#)
- 6/13 7:30 pm General Meeting "[Garden Allies](#)" Speaker: **Frédérique Lavoipierre**
- 6/21 9 am Field Trip [Carson Ridge](#)



*Viola sempervirens* - redwood violet  
by Ann Elliott

[Join/Renew](#)

[Donate](#)



CALIFORNIA  
NATIVE PLANT SOCIETY



Marin Chapter CNPS  
PO Box 1408  
Mill Valley, CA 94942-1408

[CNPS Marin Chapter Website](#) | [CNPS Statewide Website](#)

[Subscribe](#) | [Email Preferences](#) | [Unsubscribe](#) | [Privacy](#)



2707 K Street, Suite 1, Sacramento, CA 95816-5130 | Tel: (916) 447-2677  
California Native Plant Society ©2022 All rights reserved.