



California Native Plant Society

MARIN CHAPTER NEWSLETTER

Tiburon Mariposa Lily (Calochortus tiburonensis)

Marin Chapter established 1973

Monday, May 11, Marin Chapter Meeting

“Our Future Flies on the Wings of Pollinators” by guest speaker Laurie Adams

Did you know?

- You can increase the number of pollinators in your garden by making conscience choices to include plants, mostly native, that provide essential habitat for bees, butterflies, moths, beetles, hummingbirds, and other pollinators.
- The health of pollinators has a significant influence on our ecosystems and agricultural industry.
- You can find a “Selecting Plants for Pollinators” ecoregional guide for your ZIP code at www.pollinator.org/guides.htm. Eventually, 35 guides will be available for download, free-of-charge from the Pollinator Partnership and the North American Pollinator Protection Campaign (NAPPC).



Above: Honeybee (*Apis*) photo by Pollinator Partnership

As Executive Director of the Pollinator Partnership, Laurie Davies Adams has overseen the initial organization and development of the NAPPC, the 120-plus member collaboration of Mexican, Canadian, and US stakeholders that work for a variety of fields including science, the environment, agriculture, and private industry. NAPPC’s successes under Ms. Adams include the National Academy of Sciences National Research Council Study on the Status of the Pollinators of North America, the US Postal Service’s “Pollination” stamp series, and the US Senate and USDA proclamations creating National Pollinator Week.



Above: Laurie Adams photo by Pollinator Partnership

Monday, June 8, Marin Chapter Meeting

“Restoration of Redwood Creek at Muir Beach: Creating Habitat for Salmon, Frogs, and Native Plants” by guest speaker Chris Friedel

Join us for a detailed look at the upcoming Muir Beach Restoration Project (formerly known as the Big Lagoon Restoration). This project will transform the way that Redwood Creek flows into the Pacific Ocean at Muir Beach, including the construction of a new parking lot and bridge, a reconstructed creek channel, and expanded wetland habitat for frogs, salmon, and other wildlife. In addition, part of the restoration design will incorporate plants with ethnobotanical significance, to showcase a “living museum” of the Coast Miwok tribe’s relationship with the landscape.

Chris Friedel, a resident of Muir Beach, has been the manager of the Redwood Creek Native Plant Nursery, located at Muir Woods, since 2005. In addition to propagating native plants, he has coordinated the

Chapter meeting information continued on page 2

Chapter meeting information continued from page 1

re-vegetation of several restoration sites in the Redwood Creek watershed. Soon, he will take on a new role with the National Park Service as vegetation ecologist for the Muir Beach Restoration Project.



Above: Photo of an Intern planting *Juncus* at a newly excavated frog pond by Chris Friedel

Chris graduated from Stanford University in 2001 with B.S. in Earth Systems. His appreciation of California native plants began through his work as a docent and environmental educator at Stanford's Jasper Ridge Biological Preserve.



Above: Photo of the Muir Beach project area by Chris Friedel

May and June meetings:

5:45 p.m. Join friends and meet our speaker for a no-host dinner at Gira Polli of Mill Valley, 590 East Blithedale Ave. at Camino Alto. Please be prompt to be assured of a seat with our group.

7:30 p.m. Meet at the Redwoods retirement home, 40 Camino Alto, Mill Valley. Books, posters, and cards will be for sale before as well as after the meeting. Lecture starts at 8 p.m.

CALENDAR OF EVENTS

✿ **Sunday 5/3, 10 a.m.–2 p.m.**

Chapter Field Trip: A Focus on Grasses with Ashley Ratcliffe—Rock Spring, Mt. Tam

✿ **Sunday 5/3, 10:30 a.m.**

After the Fire Hike—Angel Island

✿ **Sunday 5/3, 10 a.m.–5 p.m.**

Bringing Back the Natives Garden Tour

✿ **Monday 5/4, 7:30 p.m.**

Marin Chapter Board Meeting at Marin Recycling

✿ **Sunday 5/9, 10 a.m.–5 p.m.**

Third Annual Marin Eco-Friendly Garden Tour

✿ **Monday 5/11, 7:30–9:30 p.m.**

Marin Chapter Meeting: Laurie Adams on “Our Future Flies on the Wings of Pollinators”

✿ **Saturday 5/30, 10 a.m.**

Chapter Field Trip: Fremontia or Bust! Pine Mountain Fire Road

✿ **Saturday 6/6, 10 a.m.**

Chapter Field Trip: The Rare Plants of Tiburon

✿ **Sunday 6/7, 10:30 a.m.**

After the Fire Hike 2—Angel Island

✿ **Monday 6/8, 7:30–9:30 p.m.**

Marin Chapter Meeting: Chris Friedel on “Restoration of Redwood Creek at Muir Beach: Creating Habitat for Salmon, Frogs, and Native Plants”

✿ **Saturday 6/27, 10 a.m.**

Chapter Field Trip: The Rare Plants of Bull Point—Pt. Reyes National Seashore

✿ **Monday 8/3, 10 a.m.**

Marin Chapter Board Meeting in Inverness

✿ ✿ ✿

MAGC EVENTS

Gardening to Manage Pests Naturally

Saturday, May 30, 9 a.m.–12 p.m.

Control pests without the use of pesticides. Attract beneficial insects to your garden. Discover least toxic methods for managing common garden pests such as snails, slugs, aphids, and yellow jackets.

This class is part of the Bay-Friendly Gardening Program, which was developed to encourage residents to make environmentally friendly gardening choices. Bay-Friendly gardeners work with nature to reduce waste and prevent pollution of local creeks, waterways and San Francisco Bay.

Pre-registration required. For registration information, visit <http://www.magc.org/education/classes.html>.

GARDEN TOURS AND SALES

Bringing Back the Natives Garden Tour 2009

Sunday, May 3, 10 a.m.–5 p.m.

This is a free, self-guided tour of 60 fabulous gardens that provide habitat for wildlife, are pesticide-free, conserve water, and contain 50% or more native plants. More than 50 free talks will be given throughout the day. Win a free landscape consultation from a noted native plant landscape designer by completing an evaluation on the day of the tour! Several nurseries specializing in California natives will be open on Saturday, May 2 and Sunday, May 3 from 10 a.m. to 5 p.m. These nurseries carry large quantities of hard-to-find California natives. Knowledgeable staff will be on hand to help you select plants right for your garden throughout the weekend.

Registration is required in order to receive a guidebook, which contains garden addresses, maps and directions. Registration is now open at <http://www.goingnativegardentour.org>. Early registration is highly recommended, as the tour usually fills to capacity. To volunteer or for more information, please email Kathy Kramer at Kathy@KathyKramerConsulting.net, or call (510) 236-9558 between 9 a.m. and 9 p.m.

Third Annual Marin Eco-Friendly Garden Tour

Saturday, May 9, 10 a.m.–2 p.m.

This tour promotes sustainable, organic gardening practices, and the use of California native plants to create habitat.

Garden Highlights:

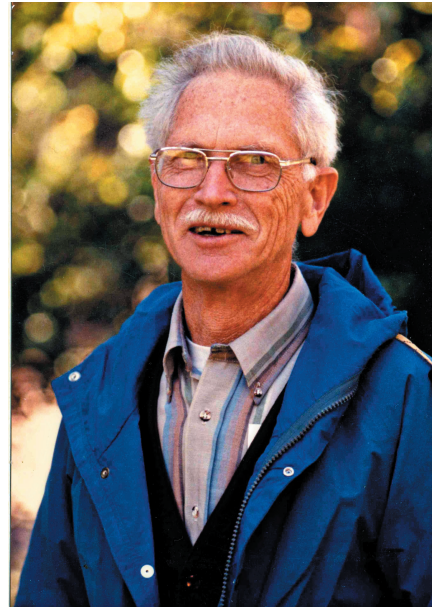
- Rain gardens and cisterns
- Smart irrigation controllers
- Permeable surfaces
- Erosion control measures
- Native no-mow lawn sod
- Lawn-free landscaping
- Edible organic gardens
- Habitat for wildlife
- Pollinators (bee hives)
- Owl boxes

Garden tours will be followed by a native plant sale, displays, and mini-lectures at the Marin Art & Garden Center. We need volunteers in the gardens. If you can help, please contact the MAGC Volunteer Coordinator (Jennifer Taibbi) at (415) 455-5260 or jennifer@magc.org or Gina Purin (MCSTOPPP) at (415) 499-3202 or gpurin@co.marlin.ca.us.

CNPS Marin will be at MAGC from 3–5 p.m. to answer plant ID and native plant questions, and will have a display of labelled weeds as an additional educational component.

MEMORIAL FOR BOB SOOST

A warm memorial gathering was held for Bob Soost at the Dance Palace Community Center on April 4th at Point Reyes Station. Wilma Follette and Catherine Caufield led the way with generous accounts of Bob's involvement with the California Native Plant Society, the Rare Plant Monitoring Team at the Point Reyes National Seashore, and the efforts to preserve the dune vegetation at Dillon Beach. Bob filled so many roles for CNPS including chair of the Marin Chapter for several years and our representative to the State Board meetings for an even longer time, conservation advocate on Water District and Open Space issues, and general friend and advisor to us all.



Above: Photo of Bob Soost by Stacy Clinton

Bob cared deeply about the plants and loved to share his knowledge. Catherine recounted that Bob had explored the Dillon Beach dunes as a boy and was thus in a perfect position to understand and speak out on the devastation caused by the campground expansion and over-development. Each of Bob's charming daughters gave a loving and sometimes humorous view of their father who filled their lives with a kind of precision and order. Bob's wife, Jean, presided with grace and warmth and made us all feel welcome and at peace. Bob is certainly missed by one and all.



RENEW ONLINE

Renew your CNPS membership online using a credit card. As an option, set it to renew automatically year after year. It's quick, easy, convenient, and reduces renewal mailing costs.

Visit <http://www.cnps.org> and click JOIN.

MAY/JUNE NATIVE PLANT WALKS

Marin Chapter Field Trip News and Policies

Take a walk on the mild side with the Marin chapter of the California Native Plant Society. All hikes are free and open to the public, so please invite your friends.

Come prepared for any type of weather or conditions, dress in layers, have non-slip footwear, and bring rain/wind protection just in case. Although it may be sunny and warm when you leave home, the weather could be cold and foggy when we reach our destination. Please be prepared. Bring lunch and plenty of water, binoculars and/or hand lenses, and your favorite field guides. For further information, contact Joe Kohn at (415) 459-0231.

Field Trip Plant Lists

Plant lists compiled by Marin CNPS for many Marin localities are available on the Marin Chapter CNPS website at <http://www.marin.edu/cnps>.

A Focus on Grasses with Ashley Ratcliffe— Rock Spring, Mt. Tam

Sunday, May 3, 10 a.m.–2 p.m.

Held in association with the Marin County Open Space District, David Herlocker writes, “this walk will explore the theme ‘how to look at a grass,’ and will serve to familiarize those of us who are botanically inclined but are intimidated by the completely new vocabulary that applies to these familiar plants. Bring a hand lens and a *Marin Flora* if you can.” (Note: The *Marin Flora* is available for sale at most CNPS walks.)

Meet at the Rock Spring parking area, located on Mt. Tam at the junction of Pantoll Rd. and Ridgecrest Blvd.

Fremontia or Bust! Pine Mountain Fire Road

Saturday, May 30, 10 a.m.

In 1999, while out bush-whacking far above Cascade Canyon in Fairfax, Dick O'Donnell literally stumbled upon a previously unknown population of *Fremontodendron californicum* ssp. *napense* (flannel bush), the only shrub of the *Sterculiaceae* (Cacao) family that exists in California. To date, only that one population, comprising close to 20 individuals, has been found growing in Marin County. About a year ago, Marin CNPS organized a treasure hunt to try to find that *Fremontia* population, but due to the ruggedness of the terrain, never did manage to find them, despite the fact that they are no more than 200-300 yards away from the intersection of the Pine Mt. and Repack Fire Roads.

Brad Kelley was persistent, and equipped with his GPS unit, eventually managed to find and record

the location of the flannel bush. He led a group of us there in early April, and we vowed to return when the *Fremontia* was in flower.

According to O'Donnell's original article in *The Four Seasons* that described the habitat of these unique and wondrous plants, “the northern border is a seasonal stream overgrown with azaleas, wonderfully floriferous and fragrant in late May.” That coincides with the *Fremontia* in flower, and seems like the perfect time for a return visit.

The location of the *Fremontia* is about two miles from the Pine Mountain Fire Road trailhead. As we ascend Carson Ridge, we'll pass through a serpentine ridge with a dwarf Sargent cypress forest, and the unique plants that live there. If our timing is right, we'll see *Boschniakia strobilacea* (ground cones) and *Gentiana affinis* (Oregon gentian) and perhaps the last of the *Calochortus umbellatus* (Oakland star-tulip) of the year in flower. Please beware that a short but strenuous cross-country (off-trail) hike is required to reach the *Fremontia*. For your protection, wear long sleeves and long pants.

Meet at the (unsigned) Azalea Hill/Pine Mt. Fire Rd. parking area, about six miles south-west of Fairfax on the Fairfax-Bolinas Rd. That's about one mile past the Meadow Club, on the way towards Alpine Dam from Fairfax.

The Rare Plants of Tiburon—Ring Mountain and Old St. Hilary's

Saturday, June 6, 10 a.m.

Marin County's most beloved rare plants make their appearance in two Tiburon locations at the end of May/beginning of June, and in what has become a yearly pilgrimage, we'll be visiting the *Calochortus tiburonensis* (Tiburon mariposa lily) of Ring Mountain and the *Streptanthus niger* (black jewel flower) of Old St. Hilary's Preserve. On Ring Mountain, we'll also likely encounter the colorful *Silene californica* (Indian pink) and rare *Hesperolinon congestum* (Marin western dwarf flax). At Old St. Hilary's we're also likely to see the stately and glorious *Lilium pardalinum* (leopard lily)!

This year the trip will be co-sponsored by NARGS (the North American Rock Garden Society)—whose members will be joining us for a fun-filled floral fiesta.

We'll meet at 10 a.m. at the top of Westward Dr. To get there, exit 101 at Paradise Dr. in Corte Madera, go east about a mile and turn south on Westward Dr., following it uphill to the end. We'll have lunch at the top of Ring Mountain, and then travel by car to Vistazo West (a right turn off Lyford Dr. near downtown Tiburon) for our second stop of the day to see the precious jewel flower.

Field trips continued on page 5

The Rare Plants of Bull Point—Pt. Reyes National Seashore

Saturday, June 27, 10 a.m.

As June turns into July at Bull Point on Pt. Reyes, what looks to most like just another cow pasture turns into Rare Plant Central!! Last year when we visited this splendid location, we saw a thought-provoking ten CNPS-listed rare plants, all within 1/4 mile of the parking area. There's the fragrant and rare *Horkelia marinensis* which, on a warm day, will scent the air like honey perfume. There's rare *Leptosiphon* as far as the eye can see, and colorful and fragrant *Monardella* growing in the sand dunes. And last but not least, there are rare and/or uncommon orchids and lilies! How is it possible, we wondered, that there could be such a concentration of so many rare and endangered plants in one small location?

To get to Bull Point, take Sir Francis Drake Blvd. west, past the town of Inverness, and at the fork in the road several miles past Inverness, follow the sign towards the Pt. Reyes Lighthouse. Bull Point is a few miles from the fork in the road, about a mile or so past the Drakes Bay Oyster Farm.

HIKES BY OTHERS

After the Fire Hike—Angel Island

Sunday, May 3 and Sunday, June 7, 10:30 a.m.

An Angel Island State Park docent will lead an all-day hike to places affected by the October wildfire, both those burned and those saved. Learn about the historic sites and impact on vegetation and the BayWood Artists. Access to the burned areas will be limited. Routes will change as trails re-open. The hike is about six miles along the Perimeter Road and will be held rain or shine.

Take the earliest ferry (\$13.50 roundtrip) from downtown Tiburon (10 a.m.) and meet at 10:30 a.m. at the Island gift shop. Return on the last ferry. Bring hiking shoes, layered clothing, water, lunch, camera, and binoculars. Group size limited. Call (415) 435-3522 for reservations. \$5 fee goes to the state park. Firefighters and their families free.

Visit Angel Island online for additional information: <http://www.angelisland.org>.

Open Space District Hikes

Marin CNPS is cooperating with Marin County Open Space naturalist David Herlocker on other wildflower-oriented walks both on weekends and weekdays. More information is available on the Marin County Open Space District website at: http://www.co.marin.ca.us/depts/PK/Main/mcosd/os_walks.asp.

PLANT OF THE MONTH

Text and Photo by Doreen Smith

The most likely place to discover this small but beautiful wildflower is in the area of Lagunitas Meadows, on the MMWD Sky Oaks property, near Fairfax. Other places where it has been seen are the top of Big Rock Ridge and at Indian Valley, Novato, near the sports field.



Above: Sticky navarretia (*Navarretia viscidula*)

Flowering plants are barely two inches tall and each flower in an inflorescence is bright blue-purple with a white center. Some years there are masses of them growing in thin, poor soil north of the Lake Lagunitas parking area. Once the flowers are finished, the seed-heads are round, hard and spiny but not really sticky—more like “stickery”.



FREE POSTER FOR NEW MEMBERS!

For a limited time, CNPS is offering a special incentive to new members! Those who join online at the \$45 level or higher will receive a beautiful, unlaminated wildflower poster of their choice:

- Wildflowers of the Desert
- Wildflowers of the Coast
- Wildflowers of the Redwood Forest

New members can sign up and indicate their poster choice online, or by writing it on a paper membership form that is mailed to the State office. Deadline for this promotion is June 1, 2009. For more information, visit <http://www.cnps.org>.

Members, please tell your friends who may be interested!



CHAPTER NEWSLETTER AVAILABLE ONLINE!

You can find an electronic (PDF) edition of this newsletter on the Marin chapter website by visiting <http://www.marin.edu/cnps/newsletters.html>.

LECTURES, WORKSHOPS, AND SYMPOSIA

Jepson Herbarium Weekend Workshops, 2009

These public programs, supported by The Friends of the Jepson Herbarium, are designed to provide members of the systematics, ecological, and conservation communities access to specialists in their field of study. The following workshops in the series are still available. Unless otherwise specified, workshops are held at UC Berkeley.

- May 16–17: Wetland Restoration (UCB and field locations in the greater Bay Area)—John Callaway
- June 4–6: Bee Pollination Ecology of Spring Wildflowers (Forest Service-Sponsored Student Opportunities) (UC Hastings Reserve, Carmel Valley)—Gordon Frankie and Robbin Thorp
- June 11–14: Mid-elevation Flora of the White Mountains (White Mountain Research Station, Crooked Creek Facility)—Jim Morefield
- June 18–21: The Inland Flora of Humboldt County (Boise Creek Campground, Humboldt County)—Michael Mesler and John O. Sawyer
- June 25–27: *Poaceae* (Forest Service-Sponsored Student Opportunities) (Sagehen Creek Field Station, Truckee, CA)—Travis Columbus
- September 12–13: Botanical Field Sketching—Linda Ann Vorobik
- September 26–27: Intermediate Plant Identification: Spotlight on *Asteraceae* and Grass-like Plants—Linda Ann Vorobik
- October 10: From Plant Press to Publication: An Introduction to Herbarium Specimen Curation—Andrew Doran
- December 12–13: Evolution and Diversity of Mushrooms (UCB and a local field site)—Tom Bruns and Else Vellinga

For more information on the workshops, or to register, please consult <http://ucjeps.berkeley.edu/workshops> or phone Cecile Shohet, at (510) 643-7008, or write her at cshohet@berkeley.edu.

Regional Parks Botanic Garden

Spring Classes 2009

- Saturdays, May 2 and May 9: Native Plant Workshops in a Private Garden—Katherine Greenberg
- Saturday, May 2 through Sunday, May 3: Wildflower Weekend in the Feather River Region of the Northern Sierra Foothills—Glenn Keator
- Saturday, May 16 through Sunday, May 17: Botanizing California: The Foothills and Mountains of The South-Central Sierra—Glenn Keator

- Saturday, June 6: Pollinator Paradise: An Introduction to Native Bees And Pollination Ecology—K Ruby

For additional information, consult <http://www.native-plants.org/events.html>. To register, call John Rusk at (510) 528-0526 or email him at john@rusk.com.

Upcoming CNPS Workshops

May 5–6: *Measuring and Monitoring*

Primary instructor: John Willoughby, former State Botanist for the Bureau of Land Management

Using classroom and field exercises, the workshop will focus on the role of plant population monitoring for adaptive management. Participants will learn how to develop good management objectives. Topics cover principles of sampling and several sampling designs, field techniques for measuring vegetation, analyzing monitoring data, and presenting results. Participants will receive a copy of the BLM-published book, *Measuring and Monitoring Plant Populations* by Caryl Elzinga, Dan Salzer, and John Willoughby.

Location: Fort Ord, Monterey

Cost: CNPS members \$290; non-members \$315

May 29–31: *Rare Plants of San Luis Obispo County*

Instructors: David Keil PhD, Deb Hillyard, Kevin Merk

The distinct combination of climate, soils, and topography of coastal San Luis Obispo County is the foundation of the unique array of natural communities, which in turn support a wide variety of endemic, rare, and endangered plant species. This workshop will utilize both classroom and field exploration of various local coastal communities, such as serpentine seep, grassland and chaparral; coastal dunes; coast live oak woodlands, including the local “elfin forest”; estuarine marsh; maritime chaparral; and coastal prairie. Learn to recognize these communities and their associated species, and which laws and regulations apply to their conservation.

Location: San Luis Obispo and coastal locations

Cost: CNPS members \$310; non-members \$325

June 10–12: *Introduction to the 2nd Edition of A Manual of California Vegetation*

Primary instructors and authors: Todd Keeler Wolf, John O. Sawyer, Julie Evens

The authors will debut the greatly expanded second edition of *A Manual of California Vegetation*. They will provide an overview of additions and changes to the manual, including new vegetation types recognized or redefined across many habitats. You will learn how to use the new manual, in the field as we traverse a

Field trips continued on page 7

Field trips continued from page 6

variety of vegetation types in the Sierra Nevada, as well as its uses for conservation and management.

Location: A three-day transect across the central Sierra Nevada, from the foothills to the eastern Sierra. We will begin at Calaveras Big Trees and end at Grover Hot Springs Valley, near Markleeville. See <http://www.scenic4.org/map.html>.

Cost: CNPS members \$445; non-members \$470

June 23–26: Great Rivers of California: the American River

Primary instructors: Robert Holland and Virginia Dains

This class will focus on how stream dynamics and sediment transport structure riparian habitats, taught from a floating classroom.

The first day we will float from Fair Oaks to Goethe Park on the lower American River, observing how the current affects our boats, the river's substrate, and the vegetation along a low-gradient valley stream. The second day we will repeat the process upstream, floating the South Fork American from Coloma to Lotus, a steep-land stream with altogether different riparian vegetation. Licensed, professional guides will captain our rafts both days. For an optional overnight third leg, we will goat pack into the American's headwaters in Desolation Valley, where riparian vegetation manifests the additional complication of persistent winter snowpack. The emphasis throughout the class will be more on the processes that shape the vegetation and less on binomial nomenclature.

Location: Headwaters, mid-elevation and valley sections of the American River.

August 12-14: Vegetation Rapid Assessment

Primary instructors: Todd Keeler Wolf, Eric Peterson, Jennifer Buck

Presented by CNPS and the California Department of Fish and Game (CDFG), this course will be a combination of lecture and field exercises in vegetation sampling. The course will focus on collecting data using the CNPS Rapid Assessment protocol. We will discuss applications of fine-scale vegetation sampling, classification and mapping, how to document rare natural communities, and how vegetation information fits into planning documents.

Location: Donner Summit

Cost: CNPS members \$365; non-members \$390

Plant Science Training Program

This program provides workshops for professional botanists, biologists, and ecologists to teach the skills and provide the tools and resources for conducting sound scientific surveys for rare plants, rare plant communities, vegetation, and wetlands.

For further information about the Plant Science Training Program or to register for workshops, visit <http://cnps.org/cnps/education/workshops/index.php> or contact Josie Crawford at jcrawford@cnps.org or (916) 447-2677, ext. 205.



UPCOMING EVENTS AT THE RICHARDSON BAY AUDUBON CENTER & SANCTUARY

The Richardson Bay Audubon Center & Sanctuary is owned and operated by the National Audubon Society. Our mission is to conserve and restore natural ecosystems by inspiring and educating our community, with a focus on youth, and by emphasizing conservation initiatives related to our Sanctuary on Richardson Bay.

For more information, visit <http://richardsonbay.audubon.org>.

Geology Rocks!

Saturday, May 9, 10 a.m.–12 p.m.

Explore the foundation of our Sanctuary and every environment! Sedimentary, Igneous, or Metamorphic— you'll have fun with your family and friends discovering the variety of rocks and minerals that make up our local geology and support some of our favorite habitats.

Appropriate for children ages 5-8. Children ages 4 and under may participate, but must be accompanied by an adult. Cost: \$15/child.

Advance registration required: (415) 388-2524. This program will be cancelled if there are less than five participants.

Restoration Work Day

Saturday, May 16, 9 a.m.–12 p.m.

Bring your family and friends for a morning of restoration and cleanup at the Richardson Bay Audubon Center & Sanctuary. We may be removing trash, invasive plants, or helping with restoration projects. Appropriate for young children. Children 10 and under must be accompanied by an adult. FREE program.

Welcome Summer Birds

Saturday, May 23, 8:30–10:30 a.m.

Join us for a bird walk led by Kerry Wilcox, our Sanctuary Manager and experienced birder. We will view and learn about the waterfowl, shorebirds, and songbirds that visit Richardson Bay in the spring and summer. Beginner and advanced birders, and families welcome. Cost: \$10 adult/\$5 child.

RSVP: (415) 388-2524.

BOARD NEWS

Book Sales Chair Needed!

We are seeking one or two people to fill this position. Books are stored privately in Mill Valley, and transported to and from the meetings by Robert Feist, so we only need people to maintain the inventory, purchase books as needed, and sell at all our membership meetings and at occasional other events, such as plant sales.

Publicity Chair Needed!

The publicity position essentially entails notifying the press of upcoming CNPS Marin programs, activities, and plant sales, but could include writing or soliciting articles on CNPS Marin and native plants.

Please call Kristin Jakob at (415) 388-1844 if you would like more details on any of the open positions.

Marin Chapter Board Meeting

Monday, August 3, 10 a.m.

The August board meeting will take place at the Inverness home of Gini and Dick Havel, at 60 Woodhaven Rd. There will be a meeting at 10 a.m.,

followed by a potluck lunch at noon. Bring a dish and beverage to share, and please RSVP to Kristin Jakob at (415) 388-1844 or kristinjakob@pacbell.net if you plan to attend, so the Havels can be told how many people to expect.

Directions: Take Sir Francis Drake Blvd. past Inverness Park, and through Inverness. One mile west of Inverness you will pass the Boatel and Barnaby's Restaurant. Take the next left, Pinehill Rd., go uphill and take the first left, Kehoe, one block, then turn left onto Woodhaven Rd. Number 60 is the first driveway on the left. The lunch and meeting will take place in the guest house to the left (west) of the main house as you approach. Main house telephone: (415) 669-7315, guest house telephone: (415) 669-7310.



GARDENING WITH NATIVES GROUP

If you are interested in finding out about activities of our Chapter's Gardening with Natives Group during this newsletter's summer hiatus, our Marin Chapter website (<http://www.marin.edu/cnps/>) will provide updated information.

Board of Directors

Position	Name
President	Open—Volunteer Needed
VP, Programs & Acting Pres.	Kristin Jakob
Chapter Council Delegate	Carolyn Longstreth
Alternate Chapter Council Delegate	Open—Volunteer Needed
Programs Co-Chair	Open—Volunteer Needed
Secretary	Paula Dawson
Treasurer	Daniel Kushner
Book Sales	Open—Volunteer Needed
Conservation Co-Chair	Eva Buxton
Conservation Co-Chair	Open—Volunteer Needed
Education	Paul da Silva
Field Trips	Joe Kohn
Historian	Vivian Mazur
Hospitality Chair	Open—Volunteer Needed
Invasives Chair	Charlotte Torgovitsky
Legislation	Phyllis Faber
Marin Flora Project	Wilma Follette
Membership	Ashley Ratcliffe
Newsletter Editor	Krista Fechner
Newsletter Folding/Mailing	Paul Kryloff
Plant Sale Co-Chair	Kristin Jakob
Plant Sale Co-Chair	Renee Fittinghoff
Poster Sales	Gerd Jakob
Publicity	Open—Volunteer Needed
Rare Plant Coordinator	Doreen Smith
Website	Mary Stevens
Member at Large	Carolyn Caldwell-White
Member at Large	Gini Havel
Member at Large	Stacey Pogorzelski
Member at Large	Dabney J. Smith
Member at Large	Carol Weiske

Board contact information has been removed from the online version of this newsletter.

Dedicated to the Preservation of California Native Flora

The California Native Plant Society is a statewide non-profit organization of amateurs and professionals with a common interest in California's native plants. The Society, working through its local chapters, seeks to increase understanding of California's native flora and to preserve this rich resource for future generations. Membership is open to all.

Join CNPS Now!

Membership includes informative publications, field trips, monthly programs, and discounts on books and posters. Also included are *Fremontia* (a quarterly journal with articles on all aspects of native plants), the *Bulletin* (a quarterly statewide report of activities and schedules), and the chapter newsletter. Please call the membership chairperson for more information.

Yes! I wish to affiliate with the Marin Chapter.

Membership Category:

- | | |
|--|---------|
| <input type="checkbox"/> Mariposa Lily | \$1,500 |
| <input type="checkbox"/> Benefactor | \$600 |
| <input type="checkbox"/> Patron | \$300 |
| <input type="checkbox"/> Plant Lover | \$100 |
| <input type="checkbox"/> Family, Group, or Library | \$75 |
| <input type="checkbox"/> Individual | \$45 |
| <input type="checkbox"/> Student or Limited Income | \$25 |

New Member Information:

Name _____

Address _____

Telephone _____

Email _____

Please mail application and check payable to **CNPS** to:

California Native Plant Society
2707 K St., Suite 1
Sacramento, CA 95816-5113

CNPS Contact Information

Phone (916) 447-2677 (state)
Fax (916) 447-2727 (state)
Email cnps@cnps.org (state)
Web <http://www.marin.edu/cnps> (chapter)
<http://www.cnps.org> (state) The state CNPS site is a resource for a wealth of materials, including promotional materials such as banners and posters.

Newsletter Only

If you wish to receive only the newsletter, please make \$10 check payable to **CNPS Marin** and mail to:

Daniel Kushner
201 Ross St.
San Rafael, CA 94901

Newsletter Subscription only \$10

Tax-Deductible Contributions

Tax-deductible contributions to the Marin Chapter are always welcome, either as memorial or honorarium donations or regular contributions. You may designate your contribution for a specific purpose of your choice. Unless otherwise designated, all contributions will be placed in a separate Special Projects Fund. The Special Projects Fund will enable the Chapter to extend our efforts to additional plant-related issues. Our regular, ongoing program and operating expenses are largely covered by our plant sales and book and poster sales.

A contribution of \$_____ is made in honor of:

Contribution designated for:

From:

Name _____

Address _____

Telephone _____

Email _____

Please send acknowledgement to:

Name _____

Address _____

Telephone _____

Email _____

Mail check payable to **CNPS** to:

Daniel Kushner
201 Ross St.
San Rafael, CA 94901

The IRS considers dues in excess of \$12.00 per year and all gifts to CNPS Tax Deductible.

CALIFORNIA NATIVE PLANT SOCIETY
MARIN CHAPTER
1 Harrison Avenue
Sausalito, CA 94965

Printed on Recycled Paper

Non-Profit Org.
U.S. Postage
PAID
San Rafael, CA
Permit No. 300

GET YOUR COPY OF THE REVISED *MARIN FLORA!*

Now available: the long-awaited, 2007 revised edition of John Thomas Howell's classic *Marin Flora* (originally published in 1949). Copies of the book will be available at chapter meetings and most field trips. You can also print out an order form at the chapter website (<http://www.marin.edu/cnps>).

Prices:	Hard cover	Soft cover
Retail	\$45 (plus \$3.49 tax)	\$35 (plus \$2.71 tax)
CNPS members (20% off)	\$36 (plus \$2.79 tax)	\$28 (plus \$2.17 tax)



ECOFEST AT THE FAIRFAX FAIR

Saturday & Sunday, June 13–14, 11 a.m.–6 p.m.

CNPS Marin will have an information table at the EcoFest, to be held at the Fairfax Pavilion during the Fairfax Fair. Admission is free.

Volunteers urgently needed—if you'd like to help staff the booth for a few hours on either day, or help set up Friday afternoon, please contact Stacey Pogorzelski at (415) 789-0475.

PLANT COMMUNITIES OF MARIN COUNTY

Do you want to learn more about the diverse plant communities of this special county?

Plant Communities of Marin County, written by David Shuford and Irene C. Timossi and illustrated with exquisite black and white photographs of the communities and their member species, is an excellent resource. Send your check payable to **CNPS** for \$11 per copy (shipping, handling, and tax included) to:

Phyllis Faber
212 Del Casa Dr.
Mill Valley, CA 94941

Enclosed is \$_____. Please send me _____
copies of *Plant Communities of Marin County*.

Name _____

Address _____

Telephone _____